

# Trefoil Factor 3 Antibody

Rabbit mAb

Catalog # AP91489

## Product Information

<b>Application</b>	WB, IHC, IP
<b>Primary Accession</b>	<a href="#">Q07654</a>
<b>Reactivity</b>	Human
<b>Clonality</b>	Monoclonal
<b>Other Names</b>	hITF; hP1.B; Intestinal trefoil factor; ITF; mITF; P1B; Polypeptide P1.B; TFF3; TFI; TREFOIL; Trefoil factor 3;
<b>Isotype</b>	Rabbit IgG
<b>Host</b>	Rabbit
<b>Calculated MW</b>	8641

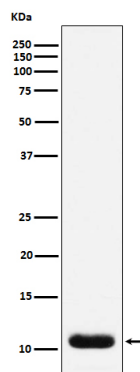
## Additional Information

<b>Dilution</b>	WB 1:500~1:1000 IHC 1:100~1:500 IP 1:30
<b>Purification</b>	Affinity-chromatography
<b>Immunogen</b>	A synthesized peptide derived from human Trefoil Factor 3
<b>Description</b>	Involved in the maintenance and repair of the intestinal mucosa. Promotes the mobility of epithelial cells in healing processes (motogen).
<b>Storage Condition and Buffer</b>	Rabbit IgG in phosphate buffered saline , pH 7.4, 150mM NaCl, 0.02% sodium azide and 50% glycerol. Store at +4°C short term. Store at -20°C long term. Avoid freeze / thaw cycle.

## Protein Information

<b>Name</b>	TFF3
<b>Synonyms</b>	ITF, TFI
<b>Function</b>	Involved in the maintenance and repair of the intestinal mucosa. Promotes the mobility of epithelial cells in healing processes (motogen).
<b>Cellular Location</b>	Secreted, extracellular space, extracellular matrix. Cytoplasm
<b>Tissue Location</b>	Expressed in goblet cells of the intestines and colon (at protein level). Expressed by goblet cells of small and large intestinal epithelia and also by the uterus. Also expressed in the hypothalamus where it is detected in paraventricular, periventricular and supraoptic nuclei (at protein level).

## Images



Western blot analysis of Trefoil Factor 3 expression in human small intestine lysate.

Please note: All products are 'FOR RESEARCH USE ONLY. NOT FOR USE IN DIAGNOSTIC OR THERAPEUTIC PROCEDURES'.