

Myelin oligodendrocyte glycoprotein Antibody

Rabbit mAb

Catalog # AP91494

Product Information

Application	WB, IHC, IF, ICC, IHF
Primary Accession	Q16653
Reactivity	Rat, Human, Mouse
Clonality	Monoclonal
Other Names	BTN6; BTNL11; MOG alpha 5; MOG alpha 6; MOG AluA; MOG AluB; MOG; MOG Ig AluB; MOGIG2; Myelin oligodendrocyte glycoprotein; NRCLP7;
Isotype	Rabbit IgG
Host	Rabbit
Calculated MW	28193

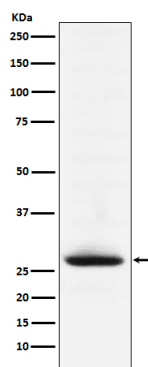
Additional Information

Dilution	WB 1:500~1:2000 IHC 1:100~1:500 ICC/IF 1:100~1:500
Purification	Affinity-chromatography
Immunogen	A synthesized peptide derived from human Myelin oligodendrocyte glycoprotein
Description	Mediates homophilic cell-cell adhesion (By similarity). Minor component of the myelin sheath. May be involved in completion and/or maintenance of the myelin sheath and in cell-cell communication.
Storage Condition and Buffer	Rabbit IgG in phosphate buffered saline , pH 7.4, 150mM NaCl, 0.02% sodium azide and 50% glycerol. Store at +4°C short term. Store at -20°C long term. Avoid freeze / thaw cycle.

Protein Information

Name	MOG
Function	Mediates homophilic cell-cell adhesion (By similarity). Minor component of the myelin sheath. May be involved in completion and/or maintenance of the myelin sheath and in cell-cell communication.
Cellular Location	[Isoform 1]: Cell membrane; Multi- pass membrane protein [Isoform 2]: Cell membrane; Single- pass type I membrane protein [Isoform 4]: Cell membrane; Single- pass type I membrane protein [Isoform 7]: Cell membrane; Single- pass type I membrane protein [Isoform 9]: Cell membrane; Single- pass type I membrane protein
Tissue Location	Found exclusively in the CNS, where it is localized on the surface of myelin and oligodendrocyte cytoplasmic membranes

Images



Western blot analysis of Myelin oligodendrocyte glycoprotein expression in mouse brain lysate.

Please note: All products are 'FOR RESEARCH USE ONLY. NOT FOR USE IN DIAGNOSTIC OR THERAPEUTIC PROCEDURES'.