

Placental alkaline phosphatase (PLAP) Antibody

Rabbit mAb

Catalog # AP91509

Product Information

| | |
|--------------------------|---|
| Application | WB, IHC, IF, ICC, IHF |
| Primary Accession | P05187 |
| Reactivity | Human |
| Clonality | Monoclonal |
| Other Names | Alkaline phosphatase, placental type; Alkaline phosphatase Regan isozyme; Placental alkaline phosphatase 1; PLAP-1; ALPP; PLAP; |
| Isotype | Rabbit IgG |
| Host | Rabbit |
| Calculated MW | 57954 |

Additional Information

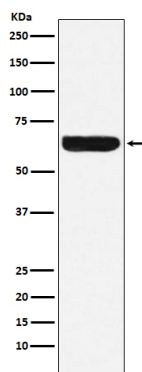
| | |
|-------------------------------------|--|
| Dilution | WB 1:1000~1:5000 IHC 1:50~1:200 ICC/IF 1:50~1:200 |
| Purification | Affinity-chromatography |
| Immunogen | A synthesized peptide derived from human Placental alkaline phosphatase (PLAP) |
| Description | PLAP may assist in guiding migratory cells and transporting specific molecules, such as fatty acids and immunoglobulins, across the plasma membrane. The three tissue-specific APs identified in human, PLAP, germ cell AP (GCAP) and intestinal AP, are 90-98% homologous and their genes are clustered on chromosome 2q. |
| Storage Condition and Buffer | Rabbit IgG in phosphate buffered saline , pH 7.4, 150mM NaCl, 0.02% sodium azide and 50% glycerol. Store at +4°C short term. Store at -20°C long term. Avoid freeze / thaw cycle. |

Protein Information

| | |
|--------------------------|--|
| Name | ALPP (HGNC:439) |
| Function | Alkaline phosphatase that can hydrolyze various phosphate compounds. |
| Cellular Location | Cell membrane; Lipid-anchor, GPI-anchor |
| Tissue Location | Detected in placenta (at protein level). |

Images

Western blot analysis of Placental alkaline phosphatase (PLAP) expression in HeLa cell lysate.



Please note: All products are 'FOR RESEARCH USE ONLY. NOT FOR USE IN DIAGNOSTIC OR THERAPEUTIC PROCEDURES'.