

# PEX16 Antibody (Center)

Affinity Purified Rabbit Polyclonal Antibody (Pab)

Catalog # AP9151c

## Product Information

---

<b>Application</b>	WB, IHC-P, E
<b>Primary Accession</b>	<a href="#">Q9Y5Y5</a>
<b>Reactivity</b>	Human
<b>Host</b>	Rabbit
<b>Clonality</b>	Polyclonal
<b>Isotype</b>	Rabbit IgG
<b>Clone Names</b>	RB23218
<b>Calculated MW</b>	38629
<b>Antigen Region</b>	247-275

## Additional Information

---

<b>Gene ID</b>	9409
<b>Other Names</b>	Peroxisomal membrane protein PEX16, Peroxin-16, Peroxisomal biogenesis factor 16, PEX16
<b>Target/Specificity</b>	This PEX16 antibody is generated from rabbits immunized with a KLH conjugated synthetic peptide between 247-275 amino acids from the Central region of human PEX16.
<b>Dilution</b>	WB~~1:1000 IHC-P~~1:100~500 E~~Use at an assay dependent concentration.
<b>Format</b>	Purified polyclonal antibody supplied in PBS with 0.09% (W/V) sodium azide. This antibody is purified through a protein A column, followed by peptide affinity purification.
<b>Storage</b>	Maintain refrigerated at 2-8°C for up to 2 weeks. For long term storage store at -20°C in small aliquots to prevent freeze-thaw cycles.
<b>Precautions</b>	PEX16 Antibody (Center) is for research use only and not for use in diagnostic or therapeutic procedures.

## Protein Information

---

<b>Name</b>	PEX16
<b>Function</b>	Required for peroxisome membrane biogenesis. May play a role in early stages of peroxisome assembly. Can recruit other peroxisomal proteins, such as PEX3 and PMP34, to de novo peroxisomes derived from the endoplasmic reticulum (ER). May function as receptor for PEX3.

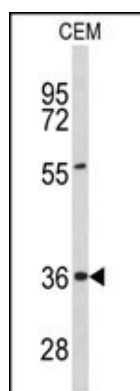
## Background

PEX16 is required for peroxisome membrane biogenesis. It may play a role in early stages of peroxisome assembly and can recruit other peroxisomal proteins, such as PEX3 and PMP34, to de novo peroxisomes derived from the endoplasmic reticulum (ER). It may function as receptor for PEX3.

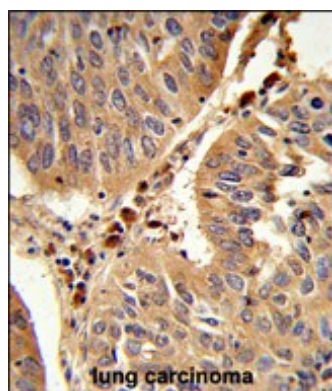
## References

Kim P.K., et.al., J. Cell Biol. 173:521-532(2006).

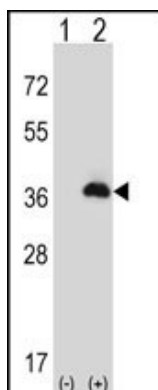
## Images



Western blot analysis of PEX16 Antibody (Center) (Cat. #AP9151c) in CEM cell line lysates (35ug/lane). PEX16 (arrow) was detected using the purified Pab.



Formalin-fixed and paraffin-embedded human lung carcinoma reacted with PEX16 Antibody (Center), which was peroxidase-conjugated to the secondary antibody, followed by DAB staining. This data demonstrates the use of this antibody for immunohistochemistry; clinical relevance has not been evaluated.



Western blot analysis of PEX16 (arrow) using rabbit polyclonal PEX16 Antibody (Center) (Cat. #AP9151c). 293 cell lysates (2 ug/lane) either nontransfected (Lane 1) or transiently transfected (Lane 2) with the PEX16 gene.