

Hemopexin Antibody

Rabbit mAb

Catalog # AP91521

Product Information

Application	WB, IHC, IF, ICC, IP, IHF
Primary Accession	P02790
Reactivity	Human
Clonality	Monoclonal
Other Names	Beta 1B glycoprotein; HEMO; Hemopexin; Hpx;
Isotype	Rabbit IgG
Host	Rabbit
Calculated MW	51676

Additional Information

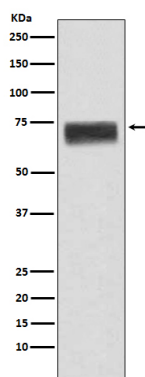
Dilution	WB 1:1000~1:5000 IHC 1:50~1:200 ICC/IF 1:50~1:200 IP 1:50
Purification	Affinity-chromatography
Immunogen	A synthesized peptide derived from human Hemopexin
Description	Binds heme and transports it to the liver for breakdown and iron recovery, after which the free hemopexin returns to the circulation.
Storage Condition and Buffer	Rabbit IgG in phosphate buffered saline , pH 7.4, 150mM NaCl, 0.02% sodium azide and 50% glycerol. Store at +4°C short term. Store at -20°C long term. Avoid freeze / thaw cycle.

Protein Information

Name	HPX
Function	Binds heme and transports it to the liver for breakdown and iron recovery, after which the free hemopexin returns to the circulation.
Cellular Location	Secreted.
Tissue Location	Expressed by the liver and secreted in plasma.

Images

Western blot analysis of Hemopexin expression in human fetal liver lysate.



Please note: All products are 'FOR RESEARCH USE ONLY. NOT FOR USE IN DIAGNOSTIC OR THERAPEUTIC PROCEDURES'.