

Otx1 Antibody

Rabbit mAb

Catalog # AP91531

Product Information

Application	WB, IHC, IP
Primary Accession	P32242
Reactivity	Rat, Human, Mouse
Clonality	Monoclonal
Other Names	Homeobox protein OTX1; Orthodenticle 1; Orthodenticle homeobox 1; Orthodenticle1; otx1;
Isotype	Rabbit IgG
Host	Rabbit
Calculated MW	37327

Additional Information

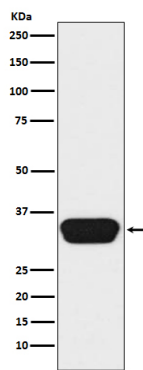
Dilution	WB 1:500~1:2000 IHC 1:100~1:500 CHIP
Purification	Affinity-chromatography
Immunogen	A synthesized peptide derived from human Otx1
Description	Probably plays a role in the development of the brain and the sense organs. Can bind to the BCD target sequence (BTS): 5'-TCTAATCCC-3'.
Storage Condition and Buffer	Rabbit IgG in phosphate buffered saline , pH 7.4, 150mM NaCl, 0.02% sodium azide and 50% glycerol. Store at +4°C short term. Store at -20°C long term. Avoid freeze / thaw cycle.

Protein Information

Name	OTX1
Function	Probably plays a role in the development of the brain and the sense organs. Can bind to the BCD target sequence (BTS): 5'-TCTAATCCC- 3'.
Cellular Location	Nucleus.
Tissue Location	Expressed in brain. Detected in the anterior part of the neural fetal retina (at protein level)

Images

Western blot analysis of Otx1 expression in Y79 cell lysate.



Please note: All products are 'FOR RESEARCH USE ONLY. NOT FOR USE IN DIAGNOSTIC OR THERAPEUTIC PROCEDURES'.