

CTLA4 (CD152) Antibody

Rabbit mAb

Catalog # AP91546

Product Information

Application	WB, IF, ICC
Primary Accession	P16410
Reactivity	Rat, Human, Mouse
Clonality	Monoclonal
Other Names	CTLA4;CD;CD152;CELIAC3;CTLA-4;GRD4;GSE;ICOS;IDDM12;
Isotype	Rabbit IgG
Host	Rabbit
Calculated MW	24656

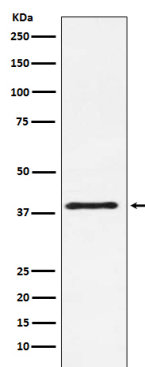
Additional Information

Dilution	WB 1:500~1:2000 ICC/IF 1:50~1:200
Purification	Affinity-chromatography
Immunogen	A synthesized peptide derived from human CTLA4 (CD152)
Description	Inhibitory receptor acting as a major negative regulator of T-cell responses. The affinity of CTLA4 for its natural B7 family ligands, CD80 and CD86, is considerably stronger than the affinity of their cognate stimulatory coreceptor CD28.
Storage Condition and Buffer	Rabbit IgG in phosphate buffered saline , pH 7.4, 150mM NaCl, 0.02% sodium azide and 50% glycerol. Store at +4°C short term. Store at -20°C long term. Avoid freeze / thaw cycle.

Protein Information

Name	CTLA4
Synonyms	CD152
Function	Inhibitory receptor acting as a major negative regulator of T-cell responses. The affinity of CTLA4 for its natural B7 family ligands, CD80 and CD86, is considerably stronger than the affinity of their cognate stimulatory coreceptor CD28.
Cellular Location	Cell membrane; Single-pass type I membrane protein. Note=Exists primarily an intracellular antigen whose surface expression is tightly regulated by restricted trafficking to the cell surface and rapid internalization
Tissue Location	Widely expressed with highest levels in lymphoid tissues. Detected in activated T-cells where expression levels are 30- to 50-fold less than CD28, the stimulatory coreceptor, on the cell surface following activation.

Images



Western blot analysis of CTLA4 (CD152) expression in NIH/3T3 cell lysate.

Please note: All products are 'FOR RESEARCH USE ONLY. NOT FOR USE IN DIAGNOSTIC OR THERAPEUTIC PROCEDURES'.