

IkB epsilon Antibody

Rabbit mAb

Catalog # AP91548

Product Information

Application	WB, IHC, IF, ICC, IP, IHF
Primary Accession	O00221
Reactivity	Human
Clonality	Monoclonal
Other Names	I-kappa-B-epsilon; IkappaBepsilon; IkB-E; IkB-epsilon; IKBE; NF-kappa-B inhibitor epsilon; NF-kappa-BIE; NFKBIE;
Isotype	Rabbit IgG
Host	Rabbit
Calculated MW	52864

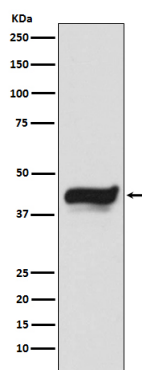
Additional Information

Dilution	WB 1:500~1:2000 IHC 1:50~1:200 ICC/IF 1:50~1:200 IP 1:50
Purification	Affinity-chromatography
Immunogen	A synthesized peptide derived from human IkB epsilon
Description	Inhibits NF-kappa-B by complexing with and trapping it in the cytoplasm. Inhibits DNA-binding of NF-kappa-B p50-p65 and p50-c-Rel complexes.
Storage Condition and Buffer	Rabbit IgG in phosphate buffered saline , pH 7.4, 150mM NaCl, 0.02% sodium azide and 50% glycerol. Store at +4°C short term. Store at -20°C long term. Avoid freeze / thaw cycle.

Protein Information

Name	NFKBIE
Synonyms	IKBE
Function	Sequesters NF-kappa-B transcription factor complexes in the cytoplasm, thereby inhibiting their activity (PubMed: 9315679). Sequestered complexes include NFKB1-RELA (p50-p65) and NFKB1-REL (p50- c-Rel) complexes (PubMed: 9135156 , PubMed: 9315679). Limits B-cell activation in response to pathogens, and also plays an important role in B-cell development (By similarity).
Cellular Location	Cytoplasm.
Tissue Location	Highly expressed in spleen, testis and lung, followed by kidney, pancreas, heart, placenta and brain. Also expressed in granulocytes and macrophages

Images



Western blot analysis of IKB epsilon expression in HeLa cell lysate.

Please note: All products are 'FOR RESEARCH USE ONLY. NOT FOR USE IN DIAGNOSTIC OR THERAPEUTIC PROCEDURES'.