

Claudin 4 Antibody

Rabbit mAb

Catalog # AP91567

Product Information

| | |
|--------------------------|---|
| Application | WB, IHC, IP |
| Primary Accession | O14493 |
| Reactivity | Human |
| Clonality | Monoclonal |
| Other Names | CLD4; CLDN4; CPE- receptor; CPE-R; CPER; CPETR1; Clostridium perfringens enterotoxin receptor; WBSR8; Williams-Beuren syndrome chromosome region 8 protein; |
| Isotype | Rabbit IgG |
| Host | Rabbit |
| Calculated MW | 22077 |

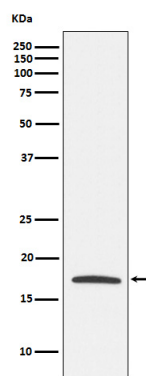
Additional Information

| | |
|-------------------------------------|---|
| Dilution | WB 1:500~1:1000 IHC 1:100~1:500 IP 1:20 |
| Purification | Affinity-chromatography |
| Immunogen | A synthesized peptide derived from human Claudin 4 |
| Description | Plays a major role in tight junction-specific obliteration of the intercellular space. |
| Storage Condition and Buffer | Rabbit IgG in phosphate buffered saline , pH 7.4, 150mM NaCl, 0.02% sodium azide and 50% glycerol. Store at +4°C short term. Store at -20°C long term. Avoid freeze / thaw cycle. |

Protein Information

| | |
|--------------------------|--|
| Name | CLDN4 {ECO:0000303 PubMed:35773259, ECO:0000312 HGNC:HGNC:2046} |
| Function | Can associate with other claudins to regulate tight junction structural and functional strand dynamics (PubMed: 35773259 , PubMed: 36008380). May coassemble with CLDN8 into tight junction strands containing anion-selective channels that convey paracellular chloride permeability in renal collecting ducts (By similarity) (PubMed: 36008380). May integrate into CLDN3 strands to modulate localized tight junction barrier properties (PubMed: 35773259 , PubMed: 36008380). May disrupt strand assembly of channel-forming CLDN2 and CLDN15 and inhibit cation conductance (PubMed: 35773259 , PubMed: 36008380). Cannot form tight junction strands on its own (PubMed: 35773259 , PubMed: 36008380). |
| Cellular Location | Cell junction, tight junction. Cell membrane; Multi-pass membrane protein |

Images



Western blot analysis of Claudin 4 expression in MCF7 cell lysate.

Please note: All products are 'FOR RESEARCH USE ONLY. NOT FOR USE IN DIAGNOSTIC OR THERAPEUTIC PROCEDURES'.