

# POMC Antibody

Rabbit mAb

Catalog # AP91569

## Product Information

<b>Application</b>	WB, IHC, IP
<b>Primary Accession</b>	<a href="#">P01189</a>
<b>Reactivity</b>	Rat, Human, Mouse
<b>Clonality</b>	Monoclonal
<b>Other Names</b>	LPH; MSH; NPP; POC; ACTH; CLIP;
<b>Isotype</b>	Rabbit IgG
<b>Host</b>	Rabbit
<b>Calculated MW</b>	29424

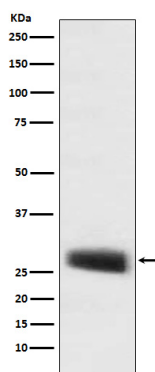
## Additional Information

<b>Dilution</b>	WB 1:500~1:2000 IHC 1:100~1:500 IP 1:50
<b>Purification</b>	Affinity-chromatography
<b>Immunogen</b>	A synthesized peptide derived from human POMC
<b>Description</b>	ACTH stimulates the adrenal glands to release cortisol. MSH (melanocyte-stimulating hormone) increases the pigmentation of skin by increasing melanin production in melanocytes. Beta-endorphin and Met-enkephalin are endogenous opiates.
<b>Storage Condition and Buffer</b>	Rabbit IgG in phosphate buffered saline , pH 7.4, 150mM NaCl, 0.02% sodium azide and 50% glycerol. Store at +4°C short term. Store at -20°C long term. Avoid freeze / thaw cycle.

## Protein Information

<b>Name</b>	POMC
<b>Function</b>	[Corticotropin]: Stimulates the adrenal glands to release cortisol. [Melanocyte-stimulating hormone beta]: Increases the pigmentation of skin by increasing melanin production in melanocytes. [Met-enkephalin]: Endogenous opiate.
<b>Cellular Location</b>	Secreted {ECO:0000250 UniProtKB:P01193}. Note=Melanocyte-stimulating hormone alpha and beta-endorphin are stored in separate granules in hypothalamic POMC neurons, suggesting that secretion may be under the control of different regulatory mechanisms {ECO:0000250 UniProtKB:P01193}
<b>Tissue Location</b>	ACTH and MSH are produced by the pituitary gland.

## Images



Western blot analysis of POMC expression in mouse pituitary lysate.

Please note: All products are 'FOR RESEARCH USE ONLY. NOT FOR USE IN DIAGNOSTIC OR THERAPEUTIC PROCEDURES'.