

# BOB1 Antibody

Rabbit mAb

Catalog # AP91574

## Product Information

<b>Application</b>	WB, IHC, IP
<b>Primary Accession</b>	<a href="#">Q16633</a>
<b>Reactivity</b>	Human
<b>Clonality</b>	Monoclonal
<b>Other Names</b>	BOB 1; BOB-1; OBF 1; OBF1; OCA B; OCA-B; OCAB; OCT binding factor 1; Pou2af1;
<b>Isotype</b>	Rabbit IgG
<b>Host</b>	Rabbit
<b>Calculated MW</b>	27436

## Additional Information

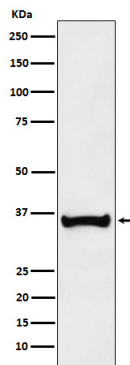
<b>Dilution</b>	WB 1:500~1:2000 IHC 1:100~1:500 IP 1:30
<b>Purification</b>	Affinity-chromatography
<b>Immunogen</b>	A synthesized peptide derived from human BOB1
<b>Description</b>	Transcriptional coactivator that specifically associates with either OCT1 or OCT2. It boosts the OCT1 mediated promoter activity and to a lesser extent, that of OCT2. It has no intrinsic DNA-binding activity. It recognizes the POU domains of OCT1 and OCT2. It is essential for the response of B-cells to antigens and required for the formation of germinal centers.
<b>Storage Condition and Buffer</b>	Rabbit IgG in phosphate buffered saline , pH 7.4, 150mM NaCl, 0.02% sodium azide and 50% glycerol. Store at +4°C short term. Store at -20°C long term. Avoid freeze / thaw cycle.

## Protein Information

<b>Name</b>	POU2AF1 ( <a href="#">HGNC:9211</a> )
<b>Function</b>	Transcriptional coactivator that specifically associates with either POU2F1/OCT1 or POU2F2/OCT2 (PubMed: <a href="#">7859290</a> ). It boosts the POU2F1/OCT1 mediated promoter activity and to a lesser extent, that of POU2F2/OCT2 (PubMed: <a href="#">7779176</a> ). It recognizes the POU domains of POU2F1/OCT1 and POU2F2/OCT2 (PubMed: <a href="#">7779176</a> ). It is essential for the response of B-cells to antigens and required for the formation of germinal centers (PubMed: <a href="#">7623806</a> , PubMed: <a href="#">7859290</a> ). Regulates IL6 expression in B cells as POU2F2/OCT2 coactivator (By similarity).
<b>Cellular Location</b>	Nucleus.
<b>Tissue Location</b>	B-cell specific (PubMed: <a href="#">7779176</a> , PubMed: <a href="#">7859290</a> ). Detected in mainly in spleen, but also in thymus, peripheral blood leukocyte and small intestine

## Images

---



Western blot analysis of BOB1 expression in Ramos cell lysate.

Please note: All products are 'FOR RESEARCH USE ONLY. NOT FOR USE IN DIAGNOSTIC OR THERAPEUTIC PROCEDURES'.