

CES7 Antibody (Center)

Affinity Purified Rabbit Polyclonal Antibody (Pab)
Catalog # AP9157c

Product Information

Application	WB, IHC-P, E
Primary Accession	Q6NT32
Reactivity	Human
Host	Rabbit
Clonality	Polyclonal
Isotype	Rabbit IgG
Clone Names	RB23272
Antigen Region	244-270

Additional Information

Other Names	Carboxylesterase 5A, Carboxylesterase-like urinary excreted protein homolog, Cauxin, CES5A, CES7
Target/Specificity	This CES7 antibody is generated from rabbits immunized with a KLH conjugated synthetic peptide between 244-270 amino acids from the Central region of human CES7.
Dilution	WB~~1:1000 IHC-P~~1:100~500 E~~Use at an assay dependent concentration.
Format	Purified polyclonal antibody supplied in PBS with 0.09% (W/V) sodium azide. This antibody is purified through a protein A column, followed by peptide affinity purification.
Storage	Maintain refrigerated at 2-8°C for up to 2 weeks. For long term storage store at -20°C in small aliquots to prevent freeze-thaw cycles.
Precautions	CES7 Antibody (Center) is for research use only and not for use in diagnostic or therapeutic procedures.

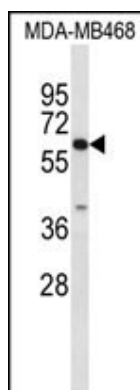
Protein Information

Background

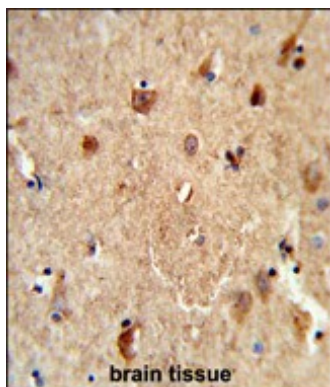
CES7 is involved in the detoxification of xenobiotics and in the activation of ester and amide prodrugs (By similarity).

References

Images



Western blot analysis of CES7 Antibody (Center) (Cat. #AP9157c) in MDA-MB468 cell line lysates (35ug/lane). CES7 (arrow) was detected using the purified Pab.



Formalin-fixed and paraffin-embedded human brain tissue reacted with CES7 Antibody (Center), which was peroxidase-conjugated to the secondary antibody, followed by DAB staining. This data demonstrates the use of this antibody for immunohistochemistry; clinical relevance has not been evaluated.

Please note: All products are 'FOR RESEARCH USE ONLY. NOT FOR USE IN DIAGNOSTIC OR THERAPEUTIC PROCEDURES'.