

# Ctip1 Antibody

Rabbit mAb

Catalog # AP91581

## Product Information

<b>Application</b>	WB, IHC, IF, FC, ICC, IHF
<b>Primary Accession</b>	<a href="#">Q9H165</a>
<b>Reactivity</b>	Rat, Human, Mouse
<b>Clonality</b>	Monoclonal
<b>Other Names</b>	EVI9; CTIP1; ZNF856; HBFQTL5; BCL11A-L; BCL11A-S; BCL11a-M; BCL11A-XL;
<b>Isotype</b>	Rabbit IgG
<b>Host</b>	Rabbit
<b>Calculated MW</b>	91197

## Additional Information

<b>Dilution</b>	WB 1:1000~1:5000 IHC 1:50~1:200 ICC/IF 1:50~1:200 FC 1:100
<b>Purification</b>	Affinity-chromatography
<b>Immunogen</b>	A synthesized peptide derived from human Ctip1
<b>Description</b>	Functions as a myeloid and B-cell proto-oncogene. May play important roles in leukemogenesis and hematopoiesis. An essential factor in lymphopoiesis, is required for B-cell formation in fetal liver. May function as a modulator of the transcriptional repression activity of ARP1.
<b>Storage Condition and Buffer</b>	Rabbit IgG in phosphate buffered saline , pH 7.4, 150mM NaCl, 0.02% sodium azide and 50% glycerol. Store at +4°C short term. Store at -20°C long term. Avoid freeze / thaw cycle.

## Protein Information

<b>Name</b>	BCL11A
<b>Synonyms</b>	CTIP1, EVI9, KIAA1809, ZNF856
<b>Function</b>	Transcription factor (PubMed: <a href="#">16704730</a> , PubMed: <a href="#">29606353</a> ). Associated with the BAF SWI/SNF chromatin remodeling complex (PubMed: <a href="#">23644491</a> , PubMed: <a href="#">39607926</a> ). Binds to the 5'-TGACCA-3' sequence motif in regulatory regions of target genes, including a distal promoter of the HBG1 hemoglobin subunit gamma-1 gene (PubMed: <a href="#">29606353</a> , PubMed: <a href="#">39423807</a> ). Involved in regulation of the developmental switch from gamma- to beta-globin, probably via direct repression of HBG1; hence indirectly repressing fetal hemoglobin (HbF) level (PubMed: <a href="#">26375765</a> , PubMed: <a href="#">29606353</a> , PubMed: <a href="#">39423807</a> , PubMed: <a href="#">39607926</a> ). Involved in brain development (PubMed: <a href="#">27453576</a> ). May play a role in hematopoiesis (By similarity). Essential factor in lymphopoiesis required for B-cell formation in fetal liver (By similarity). May function as a modulator of the transcriptional repression activity of NR2F2 (By similarity).

**Cellular Location**

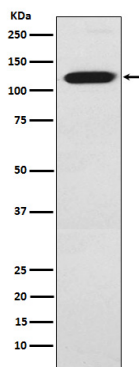
Cytoplasm. Nucleus. Chromosome. Note=Associates with the nuclear body  
Colocalizes with SUMO1 and SENP2 in nuclear speckles (By similarity)  
[Isoform 2]: Cytoplasm. Nucleus Note=Predominantly localized in the nucleus  
in nuclear paraspeckles

**Tissue Location**

Expressed at high levels in brain, spleen thymus, bone marrow and testis.  
Expressed in CD34-positive myeloid precursor cells, B-cells, monocytes and  
megakaryocytes. Expression is tightly regulated during B-cell development.

**Images**

---



Western blot analysis of CtIP1 expression in Jurkat cell lysate.

Please note: All products are 'FOR RESEARCH USE ONLY. NOT FOR USE IN DIAGNOSTIC OR THERAPEUTIC PROCEDURES'.