

Huntingtin Antibody

Rabbit mAb

Catalog # AP91590

Product Information

Application	WB, IHC, IF, FC, ICC, IHF
Primary Accession	P42858
Reactivity	Rat, Human, Mouse
Clonality	Monoclonal
Other Names	HD; HDH; HTT; Huntingtin; IT15; ZHD;
Isotype	Rabbit IgG
Host	Rabbit
Calculated MW	347603

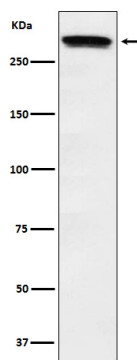
Additional Information

Dilution	WB 1:500~1:2000 IHC 1:50~1:200 ICC/IF 1:100~1:500 FC 1:100
Purification	Affinity-chromatography
Immunogen	A synthesized peptide derived from human Huntingtin
Description	May play a role in microtubule-mediated transport or vesicle function.
Storage Condition and Buffer	Rabbit IgG in phosphate buffered saline , pH 7.4, 150mM NaCl, 0.02% sodium azide and 50% glycerol. Store at +4°C short term. Store at -20°C long term. Avoid freeze / thaw cycle.

Protein Information

Name	HTT
Synonyms	HD, IT15
Function	[Huntingtin]: May play a role in microtubule-mediated transport or vesicle function.
Cellular Location	[Huntingtin]: Cytoplasm. Nucleus. Early endosome. Note=The mutant Huntingtin protein colocalizes with AKAP8L in the nuclear matrix of Huntington disease neurons. Shuttles between cytoplasm and nucleus in a Ran GTPase- independent manner (PubMed:15654337). Recruits onto early endosomes in a Rab5- and HAP40-dependent fashion (PubMed:16476778)
Tissue Location	Expressed in the brain cortex (at protein level). Widely expressed with the highest level of expression in the brain (nerve fibers, varicosities, and nerve endings). In the brain, the regions where it can be mainly found are the cerebellar cortex, the neocortex, the striatum, and the hippocampal formation

Images



Western blot analysis of Huntingtin expression in HeLa cell lysate.

Please note: All products are 'FOR RESEARCH USE ONLY. NOT FOR USE IN DIAGNOSTIC OR THERAPEUTIC PROCEDURES'.