

Niemann Pick C1 Antibody

Rabbit mAb

Catalog # AP91596

Product Information

Application	WB, IHC, IF, FC, ICC, IHF
Primary Accession	O15118
Reactivity	Rat, Human, Mouse
Clonality	Monoclonal
Other Names	Niemann Pick C1 protein precursor; NPC; NPC1;
Isotype	Rabbit IgG
Host	Rabbit
Calculated MW	142167

Additional Information

Dilution	WB 1:500~1:2000 IHC 1:50~1:200 ICC/IF 1:50~1:200 FC 1:100
Purification	Affinity-chromatography
Immunogen	A synthesized peptide derived from human Niemann Pick C1
Description	Involved in the intracellular trafficking of cholesterol. May play a role in vesicular trafficking in glia, a process that may be crucial for maintaining the structural and functional integrity of nerve terminals.
Storage Condition and Buffer	Rabbit IgG in phosphate buffered saline , pH 7.4, 150mM NaCl, 0.02% sodium azide and 50% glycerol. Store at +4°C short term. Store at -20°C long term. Avoid freeze / thaw cycle.

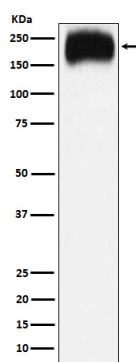
Protein Information

Name	NPC1 (HGNC:7897)
Function	Intracellular cholesterol transporter which acts in concert with NPC2 and plays an important role in the egress of cholesterol from the endosomal/lysosomal compartment (PubMed: 10821832 , PubMed: 12554680 , PubMed: 18772377 , PubMed: 27238017 , PubMed: 9211849 , PubMed: 9927649). Unesterified cholesterol that has been released from LDLs in the lumen of the late endosomes/lysosomes is transferred by NPC2 to the cholesterol-binding pocket in the N-terminal domain of NPC1 (PubMed: 18772377 , PubMed: 19563754 , PubMed: 27238017 , PubMed: 27378690 , PubMed: 28784760 , PubMed: 9211849 , PubMed: 9927649). Cholesterol binds to NPC1 with the hydroxyl group buried in the binding pocket (PubMed: 19563754). Binds oxysterol with higher affinity than cholesterol. May play a role in vesicular trafficking in glia, a process that may be crucial for maintaining the structural and functional integrity of nerve terminals (Probable). Inhibits cholesterol-mediated mTORC1 activation through its interaction with SLC38A9 (PubMed: 28336668).

Cellular Location

Late endosome membrane; Multi-pass membrane protein. Lysosome membrane; Multi-pass membrane protein

Images



Western blot analysis of Niemann Pick C1 expression in HepG2 cell lysate.

Please note: All products are 'FOR RESEARCH USE ONLY. NOT FOR USE IN DIAGNOSTIC OR THERAPEUTIC PROCEDURES'.