

SF2 Antibody

Rabbit mAb

Catalog # AP91597

Product Information

Application	WB, IHC, IF, FC, ICC, IHF
Primary Accession	Q07955
Reactivity	Rat, Human, Mouse
Clonality	Monoclonal
Other Names	ASF; ASF1; SF2; SF2p33; SRp30a; SRSF1; SFRS1;
Isotype	Rabbit IgG
Host	Rabbit
Calculated MW	27745

Additional Information

Dilution	WB 1:500~1:2000 IHC 1:100~1:500 ICC/IF 1:50~1:200 FC 1:50
Purification	Affinity-chromatography
Immunogen	A synthesized peptide derived from human SF2
Description	Plays a role in preventing exon skipping, ensuring the accuracy of splicing and regulating alternative splicing. Interacts with other spliceosomal components, via the RS domains, to form a bridge between the 5'- and 3'-splice site binding components, U1 snRNP and U2AF.
Storage Condition and Buffer	Rabbit IgG in phosphate buffered saline , pH 7.4, 150mM NaCl, 0.02% sodium azide and 50% glycerol. Store at +4°C short term. Store at -20°C long term. Avoid freeze / thaw cycle.

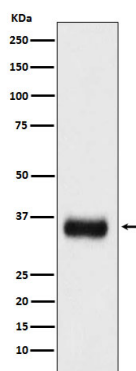
Protein Information

Name	SRSF1 (HGNC:10780)
Synonyms	ASF, SF2, SF2P33, SFRS1
Function	Plays a role in preventing exon skipping, ensuring the accuracy of splicing and regulating alternative splicing. Interacts with other spliceosomal components, via the RS domains, to form a bridge between the 5'- and 3'-splice site binding components, U1 snRNP and U2AF. Can stimulate binding of U1 snRNP to a 5'-splice site- containing pre-mRNA. Binds to purine-rich RNA sequences, either the octamer, 5'-RGAAGAAC-3' (r=A or G) or the decamers, AGGACAGAGC/AGGACGAAGC. Binds preferentially to the 5'-CGAGGCG-3' motif in vitro. Three copies of the octamer constitute a powerful splicing enhancer in vitro, the ASF/SF2 splicing enhancer (ASE) which can specifically activate ASE-dependent splicing. Isoform ASF-2 and isoform ASF-3 act as splicing repressors. May function as export adapter involved in mRNA nuclear export through the TAP/NXF1 pathway.

Cellular Location

Cytoplasm. Nucleus speckle. Note=In nuclear speckles. Shuttles between the nucleus and the cytoplasm (PubMed:12215544, PubMed:20308322, PubMed:24449914, PubMed:9420331). Nuclear import is mediated via interaction with TNPO3 (PubMed:24449914).

Images



Western blot analysis of SF2 expression in mouse spleen lysate.

Please note: All products are 'FOR RESEARCH USE ONLY. NOT FOR USE IN DIAGNOSTIC OR THERAPEUTIC PROCEDURES'.