

mtTFA Antibody

Rabbit mAb

Catalog # AP91602

Product Information

Application	WB, IHC, IF, ICC, IP, IHF
Primary Accession	Q00059
Reactivity	Human
Clonality	Monoclonal
Other Names	MtTF1; mtTFA; TCF6; TCF6L1; TCF6L2; TCF6L3; TFAM; Transcription factor 6;
Isotype	Rabbit IgG
Host	Rabbit
Calculated MW	29097

Additional Information

Dilution	WB 1:1000~1:5000 IHC 1:50~1:200 ICC/IF 1:50~1:200 IP 1:50
Purification	Affinity-chromatography
Immunogen	A synthesized peptide derived from human mtTFA
Description	Binds to the mitochondrial light strand promoter and functions in mitochondrial transcription regulation. Required for accurate and efficient promoter recognition by the mitochondrial RNA polymerase.
Storage Condition and Buffer	Rabbit IgG in phosphate buffered saline , pH 7.4, 150mM NaCl, 0.02% sodium azide and 50% glycerol. Store at +4°C short term. Store at -20°C long term. Avoid freeze / thaw cycle.

Protein Information

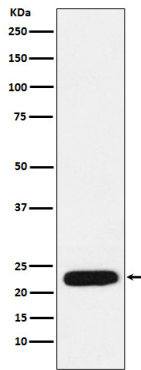
Name	TFAM (HGNC:11741)
Synonyms	TCF6, TCF6L2
Function	Binds to the mitochondrial light strand promoter and functions in mitochondrial transcription regulation (PubMed: 29445193 , PubMed: 32183942). Component of the mitochondrial transcription initiation complex, composed at least of TFB2M, TFAM and POLRMT that is required for basal transcription of mitochondrial DNA (PubMed: 29149603). In this complex, TFAM recruits POLRMT to a specific promoter whereas TFB2M induces structural changes in POLRMT to enable promoter opening and trapping of the DNA non-template strand (PubMed: 20410300). Required for accurate and efficient promoter recognition by the mitochondrial RNA polymerase (PubMed: 22037172). Promotes transcription initiation from the HSP1 and the light strand promoter by binding immediately upstream of transcriptional start sites (PubMed: 22037172). Is able to unwind DNA (PubMed: 22037172). Bends the mitochondrial light strand promoter DNA into a U-turn shape via its HMG boxes (PubMed: 1737790). Required for

maintenance of normal levels of mitochondrial DNA (PubMed:[19304746](#), PubMed:[22841477](#)). May play a role in organizing and compacting mitochondrial DNA (PubMed:[22037171](#)).

Cellular Location

Mitochondrion. Mitochondrion matrix, mitochondrion nucleoid

Images



Western blot analysis of mtTFA expression in MCF7 cell lysate.

Please note: All products are 'FOR RESEARCH USE ONLY. NOT FOR USE IN DIAGNOSTIC OR THERAPEUTIC PROCEDURES'.