

SMYD3 Antibody

Rabbit mAb

Catalog # AP91606

Product Information

Application	WB, IHC, IF, FC, ICC, IP, IHF
Primary Accession	Q9H7B4
Reactivity	Rat, Human, Mouse
Clonality	Monoclonal
Other Names	KMT3E; Smyd3; ZMYND1; ZNFN3A1;
Isotype	Rabbit IgG
Host	Rabbit
Calculated MW	49097

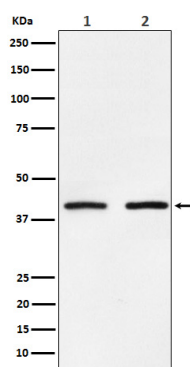
Additional Information

Dilution	WB 1:500~1:2000 IHC 1:50~1:200 ICC/IF 1:50~1:200 IP 1:50 FC 1:30
Purification	Affinity-chromatography
Immunogen	A synthesized peptide derived from human SMYD3
Description	Histone methyltransferase. Specifically methylates 'Lys-4' of histone H3, inducing di- and tri-methylation, but not monomethylation. Plays an important role in transcriptional activation as a member of an RNA polymerase complex. Binds DNA containing 5'-CCCTCC-3' or 5'-GAGGGG-3' sequences.
Storage Condition and Buffer	Rabbit IgG in phosphate buffered saline , pH 7.4, 150mM NaCl, 0.02% sodium azide and 50% glycerol. Store at +4°C short term. Store at -20°C long term. Avoid freeze / thaw cycle.

Protein Information

Name	SMYD3
Synonyms	ZMYND1, ZNFN3A1
Function	Histone methyltransferase. Specifically methylates 'Lys-4' of histone H3, inducing di- and tri-methylation, but not monomethylation (PubMed: 15235609 , PubMed: 22419068). Also methylates 'Lys-5' of histone H4 (PubMed: 22419068). Plays an important role in transcriptional activation as a member of an RNA polymerase complex (PubMed: 15235609). Binds DNA containing 5'-CCCTCC-3' or 5'-GAGGGG-3' sequences (PubMed: 15235609).
Cellular Location	Cytoplasm. Nucleus. Note=Mainly cytoplasmic when cells are arrested at G0/G1. Accumulates in the nucleus at S phase and G2/M.
Tissue Location	Expressed in skeletal muscles and testis. Overexpressed in a majority of colorectal and hepatocellular carcinomas.

Images



Western blot analysis of SMYD3 expression in (1) HeLa cell lysate; (2) NIH/3T3 cell lysate.

Please note: All products are 'FOR RESEARCH USE ONLY. NOT FOR USE IN DIAGNOSTIC OR THERAPEUTIC PROCEDURES'.