

CD23 Antibody

Rabbit mAb

Catalog # AP91614

Product Information

Application	WB, IHC, FC
Primary Accession	P06734
Reactivity	Human
Clonality	Monoclonal
Other Names	CD23; FCE2; CD23A; IGEBF; CLEC4J; FCER2;
Isotype	Rabbit IgG
Host	Rabbit
Calculated MW	36469

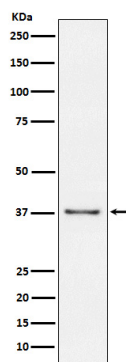
Additional Information

Dilution	WB 1:500~1:1000 IHC 1:50~1:200 FC 1:30
Purification	Affinity-chromatography
Immunogen	A synthesized peptide derived from human CD23
Description	This receptor has essential roles in the regulation of IgE production and in the differentiation of B-cells (it is a B-cell-specific antigen).
Storage Condition and Buffer	Rabbit IgG in phosphate buffered saline , pH 7.4, 150mM NaCl, 0.02% sodium azide and 50% glycerol. Store at +4°C short term. Store at -20°C long term. Avoid freeze / thaw cycle.

Protein Information

Name	FCER2
Synonyms	CD23A, CLEC4J, FCE2, IGEBF
Function	Low-affinity receptor for immunoglobulin E (IgE) and CR2/CD21. Has essential roles in the regulation of IgE production and in the differentiation of B cells. On B cells, initiates IgE-dependent antigen uptake and presentation to T cells (PubMed: 2167225). On macrophages, upon IgE binding and antigen cross-linking induces intracellular killing of parasites through activation of L-Arginine- nitric oxide pathway (PubMed: 7544003).
Cellular Location	Cell membrane; Single-pass type II membrane protein. Cell membrane; Lipid-anchor. Secreted. Note=Also exists as a soluble excreted form, sCD23
Tissue Location	Detected in urine (at protein level).

Images



Western blot analysis of CD23 expression in Raji cell lysate.

Please note: All products are 'FOR RESEARCH USE ONLY. NOT FOR USE IN DIAGNOSTIC OR THERAPEUTIC PROCEDURES'.