

CD30 Antibody

Rabbit mAb

Catalog # AP91618

Product Information

Application	WB, IHC
Primary Accession	P28908
Reactivity	Human
Clonality	Monoclonal
Other Names	CD30; D1S166E; KI1; Tnfrsf8;
Isotype	Rabbit IgG
Host	Rabbit
Calculated MW	63747

Additional Information

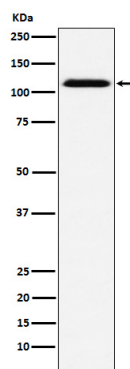
Dilution	WB 1:500~1:2000 IHC 1:100~1:500
Purification	Affinity-chromatography
Immunogen	A synthesized peptide derived from human CD30
Description	Receptor for TNFSF8/CD30L. May play a role in the regulation of cellular growth and transformation of activated lymphoblasts. Regulates gene expression through activation of NF-kappa-B.
Storage Condition and Buffer	Rabbit IgG in phosphate buffered saline , pH 7.4, 150mM NaCl, 0.02% sodium azide and 50% glycerol. Store at +4°C short term. Store at -20°C long term. Avoid freeze / thaw cycle.

Protein Information

Name	TNFRSF8 (HGNC:11923)
Function	Receptor for TNFSF8/CD30L (PubMed: 8391931). May play a role in the regulation of cellular growth and transformation of activated lymphoblasts. Regulates gene expression through activation of NF-kappa- B (PubMed: 8999898).
Cellular Location	[Isoform 1]: Cell membrane; Single-pass type I membrane protein
Tissue Location	[Isoform 2]: Detected in alveolar macrophages (at protein level).

Images

Western blot analysis of CD30 expression in A431 cell lysate.



Please note: All products are 'FOR RESEARCH USE ONLY. NOT FOR USE IN DIAGNOSTIC OR THERAPEUTIC PROCEDURES'.