

MUTYH Antibody (Center)

Purified Rabbit Polyclonal Antibody (Pab)

Catalog # AP9161c

Product Information

Application	WB, FC, IF, E
Primary Accession	Q9UIF7
Reactivity	Human, Mouse
Host	Rabbit
Clonality	Polyclonal
Isotype	Rabbit IgG
Clone Names	RB17460
Calculated MW	60069
Antigen Region	341-367

Additional Information

Gene ID	4595
Other Names	A/G-specific adenine DNA glycosylase, 322-, MutY homolog, hMYH, MUTYH, MYH
Target/Specificity	This MUTYH antibody is generated from rabbits immunized with a KLH conjugated synthetic peptide between 341-367 amino acids from the Central region of human MUTYH.
Dilution	WB~~1:1000 FC~~1:10~50 IF~~1:10~50 E~~Use at an assay dependent concentration.
Format	Purified polyclonal antibody supplied in PBS with 0.09% (W/V) sodium azide. This antibody is prepared by Saturated Ammonium Sulfate (SAS) precipitation followed by dialysis against PBS.
Storage	Maintain refrigerated at 2-8°C for up to 2 weeks. For long term storage store at -20°C in small aliquots to prevent freeze-thaw cycles.
Precautions	MUTYH Antibody (Center) is for research use only and not for use in diagnostic or therapeutic procedures.

Protein Information

Name	MUTYH
Synonyms	MYH
Function	Involved in oxidative DNA damage repair. Initiates repair of A*oxoG to C*G

by removing the inappropriately paired adenine base from the DNA backbone. Possesses both adenine and 2-OH-A DNA glycosylase activities.

Cellular Location

Nucleus. Mitochondrion {ECO:0000250|UniProtKB:Q99P21}

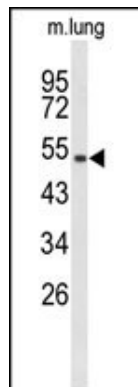
Background

MYH is the eukaryotic homolog to the *E. coli* protein MutY. It was first identified in HeLa cells and nicks DNA replication errors, specifically A/G mismatches. MYH is involved in oxidative DNA damage repair. It initiates repair of A*oxoG to C*G by removing the inappropriately paired adenine base from the DNA backbone. It possesses both adenine and 2-OH-A DNA glycosylase activities.

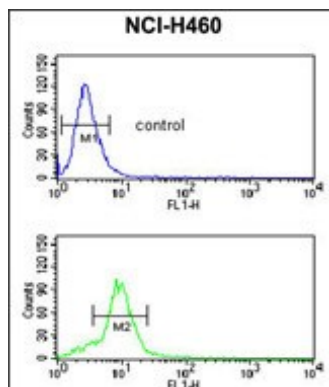
References

Kim C.J., et.al., *Oncogene* 23:6820-6822(2004).
Isidro G., et.al., *Hum. Mutat.* 24:353-354(2004).
Sieber O.M., et.al., *N. Engl. J. Med.* 348:791-799(2003).

Images

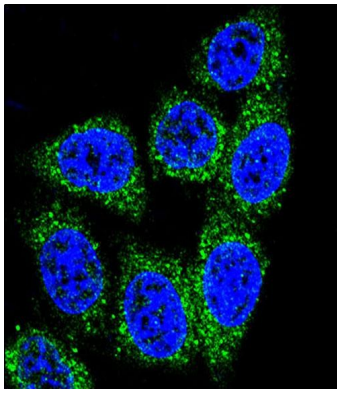


Western blot analysis of MUTYH Antibody (Center) (Cat. #AP9161c) in mouse lung tissue lysates (35ug/lane). MUTYH (arrow) was detected using the purified Pab.



MUTYH Antibody (Center) (Cat. #AP9161c) flow cytometric analysis of NCI-H460 cells (bottom histogram) compared to a negative control cell (top histogram). FITC-conjugated goat-anti-rabbit secondary antibodies were used for the analysis.

Confocal immunofluorescent analysis of MUTYH Antibody (Center) (Cat. #AP9161c) with HeLa cell followed by Alexa Fluor® 488-conjugated goat anti-rabbit IgG (green). DAPI was used to stain the cell nuclear (blue).



Please note: All products are 'FOR RESEARCH USE ONLY. NOT FOR USE IN DIAGNOSTIC OR THERAPEUTIC PROCEDURES'.