

PFKFB3 Antibody

Rabbit mAb

Catalog # AP91621

Product Information

Application	WB, IHC, IF, FC, ICC, IP, IHF
Primary Accession	Q16875
Reactivity	Rat, Human, Mouse
Clonality	Monoclonal
Other Names	6-bisphosphatase; 6-P2ase 3; Fructose-2; IPFK2; PFK/FBPase 3; PFK2; PFKFB3; uPFK 2;
Isotype	Rabbit IgG
Host	Rabbit
Calculated MW	59609

Additional Information

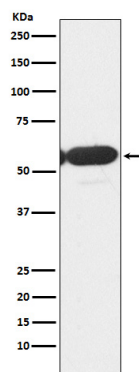
Dilution	WB 1:500~1:2000 IHC 1:50~1:200 ICC/IF 1:50~1:200 IP 1:50 FC 1:50
Purification	Affinity-chromatography
Immunogen	A synthesized peptide derived from human PFKFB3
Description	Synthesis and degradation of fructose 2,6-bisphosphate.
Storage Condition and Buffer	Rabbit IgG in phosphate buffered saline , pH 7.4, 150mM NaCl, 0.02% sodium azide and 50% glycerol. Store at +4°C short term. Store at -20°C long term. Avoid freeze / thaw cycle.

Protein Information

Name	PFKFB3
Function	Catalyzes both the synthesis and degradation of fructose 2,6- bisphosphate.
Tissue Location	Ubiquitous.

Images

Western blot analysis of PFKFB3 expression in Jurkat cell lysate.



Please note: All products are 'FOR RESEARCH USE ONLY. NOT FOR USE IN DIAGNOSTIC OR THERAPEUTIC PROCEDURES'.