

STIP1 Antibody

Rabbit mAb

Catalog # AP91624

Product Information

Application	WB, IHC, IF, FC, ICC, IP, IHF
Primary Accession	P31948
Reactivity	Rat, Human, Mouse
Clonality	Monoclonal
Other Names	Hop; P60; STI1; STI1L; STIP1; Stress induced phosphoprotein 1;
Isotype	Rabbit IgG
Host	Rabbit
Calculated MW	62639

Additional Information

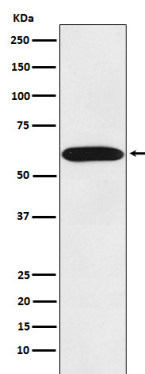
Dilution	WB 1:1000~1:5000 IHC 1:50~1:200 ICC/IF 1:50~1:200 IP 1:50 FC 1:80
Purification	Affinity-chromatography
Immunogen	A synthesized peptide derived from human STIP1
Description	Mediates the association of the molecular chaperones HSC70 and HSP90 (HSPCA and HSPCB).
Storage Condition and Buffer	Rabbit IgG in phosphate buffered saline , pH 7.4, 150mM NaCl, 0.02% sodium azide and 50% glycerol. Store at +4°C short term. Store at -20°C long term. Avoid freeze / thaw cycle.

Protein Information

Name	STIP1 (HGNC:11387)
Function	Acts as a co-chaperone for HSP90AA1 (PubMed: 27353360). Mediates the association of the molecular chaperones HSPA8/HSC70 and HSP90 (By similarity).
Cellular Location	Cytoplasm {ECO:0000250 UniProtKB:Q60864}. Nucleus {ECO:0000250 UniProtKB:Q60864}. Dynein axonemal particle {ECO:0000250 UniProtKB:Q7ZWU1}

Images

Western blot analysis of STIP1 expression in Jurkat cell lysate.



Please note: All products are 'FOR RESEARCH USE ONLY. NOT FOR USE IN DIAGNOSTIC OR THERAPEUTIC PROCEDURES'.