

GLP2 Antibody

Rabbit mAb

Catalog # AP91630

Product Information

Application	WB
Primary Accession	P01275
Reactivity	Human
Clonality	Monoclonal
Other Names	GCG; GLP 2; GRPP;
Isotype	Rabbit IgG
Host	Rabbit
Calculated MW	20909

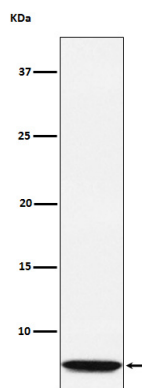
Additional Information

Dilution	WB 1:500~1:2000
Purification	Affinity-chromatography
Immunogen	A synthesized peptide derived from human GLP2
Description	Human GLP2 (glucagon like peptide 2) is a peptide hormone of the glucagon family produced by the L cells of the intestinal mucosa and originates from the same prohormone as glucagon.
Storage Condition and Buffer	Rabbit IgG in phosphate buffered saline , pH 7.4, 150mM NaCl, 0.02% sodium azide and 50% glycerol. Store at +4°C short term. Store at -20°C long term. Avoid freeze / thaw cycle.

Protein Information

Name	GCG (HGNC:4191)
Function	[Glucagon]: Plays a key role in glucose metabolism and homeostasis. Regulates blood glucose by increasing gluconeogenesis and decreasing glycolysis. A counterregulatory hormone of insulin, raises plasma glucose levels in response to insulin-induced hypoglycemia. Plays an important role in initiating and maintaining hyperglycemic conditions in diabetes.
Cellular Location	Secreted.
Tissue Location	[Glucagon]: Secreted in the A cells of the islets of Langerhans. [Glucagon-like peptide 2]: Secreted from enteroendocrine cells throughout the gastrointestinal tract. Also secreted in selected neurons in the brain [Oxyntomodulin]: Secreted from enteroendocrine cells throughout the gastrointestinal tract

Images



Western blot analysis of GLP2 expression in GLP2 recombinant protein lysate.

Please note: All products are 'FOR RESEARCH USE ONLY. NOT FOR USE IN DIAGNOSTIC OR THERAPEUTIC PROCEDURES'.