

Aldolase Antibody

Rabbit mAb

Catalog # AP91636

Product Information

Application	WB, IHC, IF, ICC, IHF
Primary Accession	P04075
Reactivity	Rat, Human, Mouse
Clonality	Monoclonal
Other Names	ALDA; Aldo1; ALDOA; Aldolase 1; Aldolase A; GSD12; HEL S 87p;
Isotype	Rabbit IgG
Host	Rabbit
Calculated MW	39420

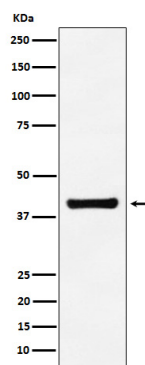
Additional Information

Dilution	WB 1:500~1:2000 IHC 1:50~1:200 ICC/IF 1:50~1:200
Purification	Affinity-chromatography
Immunogen	A synthesized peptide derived from human Aldolase
Description	Plays a key role in glycolysis and gluconeogenesis. In addition, may also function as scaffolding protein.
Storage Condition and Buffer	Rabbit IgG in phosphate buffered saline , pH 7.4, 150mM NaCl, 0.02% sodium azide and 50% glycerol. Store at +4°C short term. Store at -20°C long term. Avoid freeze / thaw cycle.

Protein Information

Name	ALDOA (HGNC:414)
Synonyms	ALDA
Function	Catalyzes the reversible conversion of beta-D-fructose 1,6- biphosphate (FBP) into two triose phosphate and plays a key role in glycolysis and gluconeogenesis (PubMed: 14766013). In addition, may also function as scaffolding protein (By similarity).
Cellular Location	Cytoplasm, myofibril, sarcomere, I band {ECO:0000250 UniProtKB:P00883}. Cytoplasm, myofibril, sarcomere, M line {ECO:0000250 UniProtKB:P00883}. Note=In skeletal muscle, accumulates around the M line and within the I band, colocalizing with FBP2 on both sides of the Z line in the absence of Ca(2+) {ECO:0000250 UniProtKB:P00883}

Images



Western blot analysis of Aldolase expression in A549 cell lysate.

Please note: All products are 'FOR RESEARCH USE ONLY. NOT FOR USE IN DIAGNOSTIC OR THERAPEUTIC PROCEDURES'.