

# Pyruvate Dehydrogenase E1 beta subunit Antibody

Rabbit mAb

Catalog # AP91638

## Product Information

<b>Application</b>	WB, IHC, IF, FC, ICC, IP, IHF
<b>Primary Accession</b>	<a href="#">P11177</a>
<b>Reactivity</b>	Rat, Human, Mouse
<b>Clonality</b>	Monoclonal
<b>Other Names</b>	pdhB; DHBD; PDHE1 B; PDHE1-B; PHE1B;
<b>Isotype</b>	Rabbit IgG
<b>Host</b>	Rabbit
<b>Calculated MW</b>	39233

## Additional Information

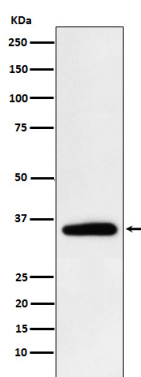
<b>Dilution</b>	WB 1:1000~1:5000 IHC 1:50~1:200 ICC/IF 1:50~1:200 IP 1:50 FC 1:50
<b>Purification</b>	Affinity-chromatography
<b>Immunogen</b>	A synthesized peptide derived from human Pyruvate Dehydrogenase E1 beta subunit
<b>Description</b>	The pyruvate dehydrogenase complex catalyzes the overall conversion of pyruvate to acetyl-CoA and CO <sub>2</sub> . It contains multiple copies of three enzymatic components: pyruvate dehydrogenase (E1), dihydrolipoamide acetyltransferase (E2) and lipoamide dehydrogenase (E3).
<b>Storage Condition and Buffer</b>	Rabbit IgG in phosphate buffered saline , pH 7.4, 150mM NaCl, 0.02% sodium azide and 50% glycerol. Store at +4°C short term. Store at -20°C long term. Avoid freeze / thaw cycle.

## Protein Information

<b>Name</b>	PDHB ( <a href="#">HGNC:8808</a> )
<b>Synonyms</b>	PHE1B
<b>Function</b>	Together with PDHA1 forms the heterotetrameric E1 subunit of the pyruvate dehydrogenase (PDH) complex (PubMed: <a href="#">17474719</a> , PubMed: <a href="#">19081061</a> ). The PDH complex catalyzes the overall conversion of pyruvate to acetyl-CoA and CO <sub>2</sub> , and thereby links cytoplasmic glycolysis and the mitochondrial tricarboxylic acid (TCA) cycle (Probable). It contains multiple copies of three enzymatic components: pyruvate dehydrogenase (E1), dihydrolipoamide acetyltransferase (E2) and dihydrolipoamide dehydrogenase (E3) (Probable). The E1 subunit catalyzes both the thiamine pyrophosphate (TPP)-dependent decarboxylation of pyruvate and the reductive acetylation of a lipoyl group covalently linked to the lipoyl-bearing domains of E2 (PubMed: <a href="#">19081061</a> ).
<b>Cellular Location</b>	Mitochondrion matrix {ECO:0000250 UniProtKB:P26284}

## Images

---



Western blot analysis of Pyruvate Dehydrogenase E1 beta subunit expression in HeLa cell lysate.

Please note: All products are 'FOR RESEARCH USE ONLY. NOT FOR USE IN DIAGNOSTIC OR THERAPEUTIC PROCEDURES'.