

# RRM2 Antibody

Rabbit mAb

Catalog # AP91639

## Product Information

---

|                          |                        |
|--------------------------|------------------------|
| <b>Application</b>       | WB, IF, ICC, IP        |
| <b>Primary Accession</b> | <a href="#">P31350</a> |
| <b>Reactivity</b>        | Human                  |
| <b>Clonality</b>         | Monoclonal             |
| <b>Other Names</b>       | R2;RR2M;               |
| <b>Isotype</b>           | Rabbit IgG             |
| <b>Host</b>              | Rabbit                 |
| <b>Calculated MW</b>     | 44878                  |

## Additional Information

---

|                                     |   |
|-------------------------------------|---|
| <b>Dilution</b>                     | WB 1:500~1:2000 ICC/IF 1:50~1:200 IP 1:50   |
| <b>Purification</b>                 | Affinity-chromatography   |
| <b>Immunogen</b>                    | A synthesized peptide derived from human RRM2   |
| <b>Description</b>                  | Provides the precursors necessary for DNA synthesis. Catalyzes the biosynthesis of deoxyribonucleotides from the corresponding ribonucleotides. Inhibits Wnt signaling.           |
| <b>Storage Condition and Buffer</b> | Rabbit IgG in phosphate buffered saline , pH 7.4, 150mM NaCl, 0.02% sodium azide and 50% glycerol. Store at +4°C short term. Store at -20°C long term. Avoid freeze / thaw cycle. |

## Protein Information

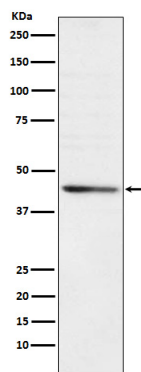
---

|                          |   |
|--------------------------|---|
| <b>Name</b>              | RRM2  |
| <b>Synonyms</b>          | RR2   |
| <b>Function</b>          | Provides the precursors necessary for DNA synthesis. Catalyzes the biosynthesis of deoxyribonucleotides from the corresponding ribonucleotides. Inhibits Wnt signaling. |
| <b>Cellular Location</b> | Cytoplasm. Nucleus. Note=Localized to the cytoplasm in S phase cells. May localize to the nucleus in G2 phase cells   |

## Images

---

Western blot analysis of RRM2 expression in HeLa cell lysate.



Please note: All products are 'FOR RESEARCH USE ONLY. NOT FOR USE IN DIAGNOSTIC OR THERAPEUTIC PROCEDURES'.