

# GRK3 Antibody

Rabbit mAb

Catalog # AP91653

## Product Information

---

<b>Application</b>	WB, IHC, IF, ICC, IHF
<b>Primary Accession</b>	<a href="#">P35626</a>
<b>Reactivity</b>	Human
<b>Clonality</b>	Monoclonal
<b>Other Names</b>	ADRBK2; BARK2; GRK3;
<b>Isotype</b>	Rabbit IgG
<b>Host</b>	Rabbit
<b>Calculated MW</b>	79710

## Additional Information

---

<b>Dilution</b>	WB 1:500~1:2000 IHC 1:50~1:200 ICC/IF 1:50~1:200
<b>Purification</b>	Affinity-chromatography
<b>Immunogen</b>	A synthesized peptide derived from human GRK3
<b>Description</b>	Specifically phosphorylates the agonist-occupied form of the beta-adrenergic and closely related receptors.
<b>Storage Condition and Buffer</b>	Rabbit IgG in phosphate buffered saline , pH 7.4, 150mM NaCl, 0.02% sodium azide and 50% glycerol. Store at +4°C short term. Store at -20°C long term. Avoid freeze / thaw cycle.

## Protein Information

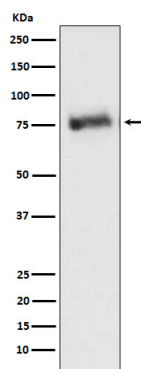
---

<b>Name</b>	GRK3 ( <a href="#">HGNC:290</a> )
<b>Function</b>	Specifically phosphorylates the agonist-occupied form of the beta-adrenergic and closely related receptors.
<b>Cellular Location</b>	Postsynapse {ECO:0000250 UniProtKB:P26819}. Presynapse {ECO:0000250 UniProtKB:P26819}

## Images

---

Western blot analysis of GRK3 expression in Ramos cell lysate.



Please note: All products are 'FOR RESEARCH USE ONLY. NOT FOR USE IN DIAGNOSTIC OR THERAPEUTIC PROCEDURES'.