

LMAN1 Antibody

Rabbit mAb

Catalog # AP91657

Product Information

Application	WB, IHC, IF, ICC, IHF
Primary Accession	P49257
Reactivity	Rat, Human, Mouse
Clonality	Monoclonal
Other Names	ERGIC5; F5F8D; FMFD1; Gp58; Lman1; MCFD1; MR60;
Isotype	Rabbit IgG
Host	Rabbit
Calculated MW	57549

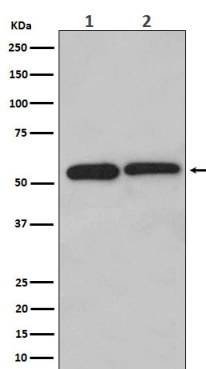
Additional Information

Dilution	WB 1:500~1:2000 IHC 1:50~1:200 ICC/IF 1:50~1:200
Purification	Affinity-chromatography
Immunogen	A synthesized peptide derived from human LMAN1
Description	Mannose-specific lectin. May recognize sugar residues of glycoproteins, glycolipids, or glycosylphosphatidyl inositol anchors and may be involved in the sorting or recycling of proteins, lipids, or both. The LMAN1-MCFD2 complex forms a specific cargo receptor for the ER-to-Golgi transport of selected proteins.
Storage Condition and Buffer	Rabbit IgG in phosphate buffered saline , pH 7.4, 150mM NaCl, 0.02% sodium azide and 50% glycerol. Store at +4°C short term. Store at -20°C long term. Avoid freeze / thaw cycle.

Protein Information

Name	LMAN1
Synonyms	ERGIC53, F5F8D
Function	Mannose-specific lectin. May recognize sugar residues of glycoproteins, glycolipids, or glycosylphosphatidyl inositol anchors and may be involved in the sorting or recycling of proteins, lipids, or both. The LMAN1-MCFD2 complex forms a specific cargo receptor for the ER-to-Golgi transport of selected proteins.
Cellular Location	Endoplasmic reticulum-Golgi intermediate compartment membrane; Single-pass type I membrane protein. Golgi apparatus membrane; Single-pass membrane protein. Endoplasmic reticulum membrane; Single-pass type I membrane protein
Tissue Location	Ubiquitous..

Images



Western blot analysis of LMAN1 expression in (1) HeLa cell lysate; (2) Jurkat cell lysate.

Please note: All products are 'FOR RESEARCH USE ONLY. NOT FOR USE IN DIAGNOSTIC OR THERAPEUTIC PROCEDURES'.