

# PDE4D Antibody

Rabbit mAb

Catalog # AP91660

## Product Information

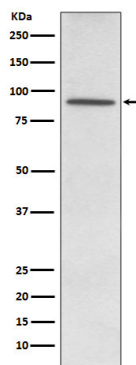
|                          |   |
|--------------------------|---|
| <b>Application</b>       | WB  |
| <b>Primary Accession</b> | <a href="#">Q08499</a>                        |
| <b>Reactivity</b>        | Human   |
| <b>Clonality</b>         | Monoclonal                                    |
| <b>Other Names</b>       | DPDE3; HSPDE4D; PDE43; Pde4d; PDE4DN2; STRK1; |
| <b>Isotype</b>           | Rabbit IgG                                    |
| <b>Host</b>              | Rabbit  |
| <b>Calculated MW</b>     | 91 KDa  |

## Additional Information

|                                     |   |
|-------------------------------------|---|
| <b>Dilution</b>                     | WB 1:500~1:2000   |
| <b>Purification</b>                 | Affinity-chromatography   |
| <b>Immunogen</b>                    | A synthesized peptide derived from human PDE4D  |
| <b>Description</b>                  | Hydrolyzes the second messenger cAMP, which is a key regulator of many important physiological processes.   |
| <b>Storage Condition and Buffer</b> | Rabbit IgG in phosphate buffered saline , pH 7.4, 150mM NaCl, 0.02% sodium azide and 50% glycerol. Store at +4°C short term. Store at -20°C long term. Avoid freeze / thaw cycle. |

## Protein Information

## Images



Western blot analysis of PDE4D expression in K562 cell lysate.