

PFDN5 Antibody

Rabbit mAb

Catalog # AP91661

Product Information

Application	WB, IHC, IP
Primary Accession	Q99471
Reactivity	Rat, Human, Mouse
Clonality	Monoclonal
Other Names	EIG 1; Eig1; MM1; PFD5; PFDN5; Prefoldin 5;
Isotype	Rabbit IgG
Host	Rabbit
Calculated MW	17328

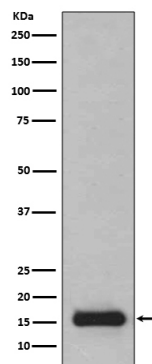
Additional Information

Dilution	WB 1:500~1:2000 IHC 1:50~1:200 IP 1:50
Purification	Affinity-chromatography
Immunogen	A synthesized peptide derived from human PFDN5
Description	Binds specifically to cytosolic chaperonin (c-CPN) and transfers target proteins to it. Binds to nascent polypeptide chain and promotes folding in an environment in which there are many competing pathways for nonnative proteins.
Storage Condition and Buffer	Rabbit IgG in phosphate buffered saline , pH 7.4, 150mM NaCl, 0.02% sodium azide and 50% glycerol. Store at +4°C short term. Store at -20°C long term. Avoid freeze / thaw cycle.

Protein Information

Name	PFDN5
Synonyms	MM1, PFD5
Function	Binds specifically to cytosolic chaperonin (c-CPN) and transfers target proteins to it. Binds to nascent polypeptide chain and promotes folding in an environment in which there are many competing pathways for nonnative proteins. Represses the transcriptional activity of MYC.
Cellular Location	[Isoform 1]: Nucleus. [Isoform 3]: Nucleus.
Tissue Location	Highly expressed in pancreas and skeletal muscle and moderately in other tissues

Images



Western blot analysis of PFDN5 expression in 293T cell lysate.

Please note: All products are 'FOR RESEARCH USE ONLY. NOT FOR USE IN DIAGNOSTIC OR THERAPEUTIC PROCEDURES'.