

Calmegin Antibody

Rabbit mAb

Catalog # AP91670

Product Information

Application	WB, IHC, IF, ICC, IP, IHF
Primary Accession	O14967
Reactivity	Rat, Human, Mouse
Clonality	Monoclonal
Other Names	CLGN; MEG 1 antigen; Calnexin-T; Calmegin precursor; Calmegin;
Isotype	Rabbit IgG
Host	Rabbit
Calculated MW	70039

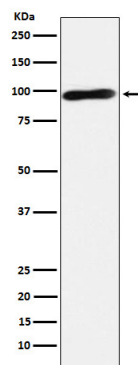
Additional Information

Dilution	WB: 1:5000~1:10000 IHC: 1:50~1:200 ICC/IF: 1:50~1:100 IP: 1:20
Purification	Affinity-chromatography
Immunogen	A synthesized peptide derived from human Calmegin
Description	Functions during spermatogenesis as a chaperone for a range of client proteins that are important for sperm adhesion onto the egg zona pellucida and for subsequent penetration of the zona pellucida. Required for normal sperm migration from the uterus into the oviduct. Required for normal male fertility. Binds calcium ions (By similarity).
Storage Condition and Buffer	Rabbit IgG in phosphate buffered saline , pH 7.4, 150mM NaCl, 0.02% sodium azide and 50% glycerol. Store at +4°C short term. Store at -20°C long term. Avoid freeze / thaw cycle.

Protein Information

Name	CLGN
Function	Functions during spermatogenesis as a chaperone for a range of client proteins that are important for sperm adhesion onto the egg zona pellucida and for subsequent penetration of the zona pellucida. Required for normal sperm migration from the uterus into the oviduct. Required for normal male fertility. Binds calcium ions (By similarity).
Cellular Location	Endoplasmic reticulum membrane; Single-pass type I membrane protein
Tissue Location	Detected in testis (at protein level). Detected in testis.

Images



Western blot analysis of Calmegin expression in Jurkat cell lysate.

Please note: All products are 'FOR RESEARCH USE ONLY. NOT FOR USE IN DIAGNOSTIC OR THERAPEUTIC PROCEDURES'.