

MMP17 Antibody

Rabbit mAb

Catalog # AP91672

Product Information

Application	WB, IHC, IF, ICC, IHF
Primary Accession	Q9ULZ9
Reactivity	Rat, Human, Mouse
Clonality	Monoclonal
Other Names	MMP 17; Mmp17; MT MMP4; MT-MMP 4; MT4 MMP; MT4-MMP; MT4MMP; MTMMP4;
Isotype	Rabbit IgG
Host	Rabbit
Calculated MW	66653

Additional Information

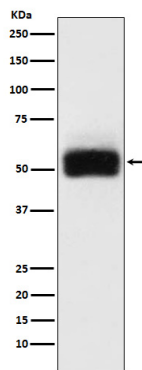
Dilution	WB 1:500~1:1000 IHC 1:50~1:200 ICC/IF 1:50~1:200
Purification	Affinity-chromatography
Immunogen	A synthesized peptide derived from human MMP17
Description	Endopeptidase that degrades various components of the extracellular matrix, such as fibrin. May be involved in the activation of membrane-bound precursors of growth factors or inflammatory mediators, such as tumor necrosis factor-alpha. May also be involved in tumoral process.
Storage Condition and Buffer	Rabbit IgG in phosphate buffered saline , pH 7.4, 150mM NaCl, 0.02% sodium azide and 50% glycerol. Store at +4°C short term. Store at -20°C long term. Avoid freeze / thaw cycle.

Protein Information

Name	MMP17
Synonyms	MT4MMP
Function	Endopeptidase that degrades various components of the extracellular matrix, such as fibrin. May be involved in the activation of membrane-bound precursors of growth factors or inflammatory mediators, such as tumor necrosis factor-alpha. May also be involved in tumoral process. Cleaves pro-TNF-alpha at the '74-Ala- -Gln-75' site. Not obvious if able to proteolytically activate progelatinase A. Does not hydrolyze collagen types I, II, III, IV and V, gelatin, fibronectin, laminin, decorin nor alpha1-antitrypsin.
Cellular Location	[Isoform Long]: Cell membrane; Lipid-anchor, GPI- anchor; Extracellular side. Secreted, extracellular space, extracellular matrix
Tissue Location	Expressed in brain, leukocytes, colon, ovary testis and breast cancer.

Expressed also in many transformed and non- transformed cell types

Images



Western blot analysis of MMP17 expression in HeLa cell lysate.

Please note: All products are 'FOR RESEARCH USE ONLY. NOT FOR USE IN DIAGNOSTIC OR THERAPEUTIC PROCEDURES'.