

CRMP1 Antibody

Rabbit mAb

Catalog # AP91675

Product Information

Application	WB, IHC, IF, FC, ICC, IP, IHF
Primary Accession	Q14194
Reactivity	Rat, Human, Mouse
Clonality	Monoclonal
Other Names	CRMP 1; Crmp1; DPYSL1; DRP1; ULIP-3; Ulip3;
Isotype	Rabbit IgG
Host	Rabbit
Calculated MW	62184

Additional Information

Dilution	WB 1:500~1:1000 IHC 1:50~1:200 ICC/IF 1:50~1:200 IP 1:40 FC 1:30
Purification	Affinity-chromatography
Immunogen	A synthesized peptide derived from human CRMP1
Description	Necessary for signaling by class 3 semaphorins and subsequent remodeling of the cytoskeleton. Plays a role in axon guidance, invasive growth and cell migration.
Storage Condition and Buffer	Rabbit IgG in phosphate buffered saline , pH 7.4, 150mM NaCl, 0.02% sodium azide and 50% glycerol. Store at +4°C short term. Store at -20°C long term. Avoid freeze / thaw cycle.

Protein Information

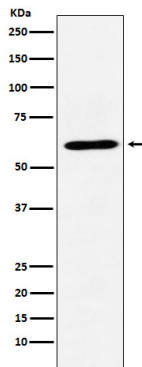
Name	CRMP1
Synonyms	DPYSL1, ULIP3
Function	Necessary for signaling by class 3 semaphorins and subsequent remodeling of the cytoskeleton (PubMed: 25358863). Plays a role in axon guidance (PubMed: 25358863). During the axon guidance process, acts downstream of SEMA3A to promote FLNA dissociation from F-actin which results in the rearrangement of the actin cytoskeleton and the collapse of the growth cone (PubMed: 25358863). Involved in invasive growth and cell migration (PubMed: 11562390). May participate in cytokinesis (PubMed: 19799413).
Cellular Location	Cytoplasm. Cytoplasm, cytoskeleton, microtubule organizing center, centrosome. Cytoplasm, cytoskeleton, spindle. Cell projection, growth cone {ECO:0000250 UniProtKB:P97427}. Cytoplasm, cytoskeleton {ECO:0000250 UniProtKB:P97427}. Perikaryon {ECO:0000250 UniProtKB:P97427}. Note=Associated with centrosomes and the mitotic spindle during metaphase (PubMed:11562390). Colocalizes with

FLNA and tubulin in the central region of DRG neuron growth cone (By similarity). Following SEMA3A stimulation of DRG neurons, colocalizes with F-actin (By similarity) {ECO:0000250 | UniProtKB:P97427, ECO:0000269 | PubMed:11562390}

Tissue Location

Brain.

Images



Western blot analysis of CRMP1 expression in SH-SY5Y cell lysate.

Please note: All products are 'FOR RESEARCH USE ONLY. NOT FOR USE IN DIAGNOSTIC OR THERAPEUTIC PROCEDURES'.