

EVI5 Antibody (Center)

Affinity Purified Rabbit Polyclonal Antibody (Pab)

Catalog # AP9168c

Product Information

Application	WB, E
Primary Accession	O60447
Other Accession	Q9D099 , Q9NUN7
Reactivity	Human, Mouse
Host	Rabbit
Clonality	Polyclonal
Isotype	Rabbit IgG
Clone Names	RB22621
Calculated MW	92949
Antigen Region	191-220

Additional Information

Gene ID	7813
Other Names	Ecotropic viral integration site 5 protein homolog, EVI-5, Neuroblastoma stage 4S gene protein, EVI5, NB4S
Target/Specificity	This EVI5 antibody is generated from rabbits immunized with a KLH conjugated synthetic peptide between 191-220 amino acids from the N-terminal region of human EVI5.
Dilution	WB~~1:1000 E~~Use at an assay dependent concentration.
Format	Purified polyclonal antibody supplied in PBS with 0.09% (W/V) sodium azide. This antibody is purified through a protein A column, followed by peptide affinity purification.
Storage	Maintain refrigerated at 2-8°C for up to 2 weeks. For long term storage store at -20°C in small aliquots to prevent freeze-thaw cycles.
Precautions	EVI5 Antibody (Center) is for research use only and not for use in diagnostic or therapeutic procedures.

Protein Information

Name	EVI5
Synonyms	NB4S
Function	Functions as a regulator of cell cycle progression by stabilizing the FBXO5

protein and promoting cyclin-A accumulation during interphase. May play a role in cytokinesis.

Cellular Location

Nucleus. Cytoplasm, cytoskeleton, microtubule organizing center, centrosome. Cytoplasm, cytoskeleton, spindle Note=Associates with the mitotic spindle through anaphase and remains within the midzone and midbody until completion of cytokinesis

Tissue Location

Expressed in various cell lines (at protein level). Expressed in a wide range of tissues including brain and adrenal

Background

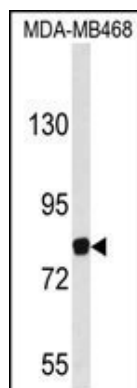
EVI5 is a novel centrosomal protein with a complex expression pattern and subcellular localization, possibly involved in centrosome stability and dynamics. It may act as an oncogene.

References

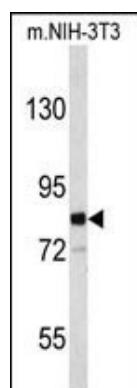
Jacob,B., et.al., Blood 115 (8), 1610-1620 (2010)

Hoppenbrouwers,I.A., et.al., J. Hum. Genet. 54 (11), 676-680 (2009)

Images



Western blot analysis of EVI5 Antibody (Center) (Cat. #AP9168c) in MDA-MB468 cell line lysates (35ug/lane). EVI5 (arrow) was detected using the purified Pab.



Western blot analysis of EVI5 Antibody (Center) (Cat. #AP9168c) in mouse NIH-3T3 cell line lysates (35ug/lane). EVI5 (arrow) was detected using the purified Pab.

Please note: All products are 'FOR RESEARCH USE ONLY. NOT FOR USE IN DIAGNOSTIC OR THERAPEUTIC PROCEDURES'.