

CXCL11 Antibody

Rabbit mAb

Catalog # AP91704

Product Information

| | |
|--------------------------|--|
| Application | WB, IF, ICC |
| Primary Accession | O14625 |
| Reactivity | Human |
| Clonality | Monoclonal |
| Other Names | betaR; CXCL11; CXCL11; H174; I TAC; IP9; ITAC; SCYB11; SCYB9B; |
| Isotype | Rabbit IgG |
| Host | Rabbit |
| Calculated MW | 10365 |

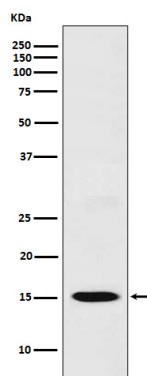
Additional Information

| | |
|-------------------------------------|--|
| Dilution | WB 1:500~1:2000 ICC/IF 1:50~1:200 |
| Purification | Affinity-chromatography |
| Immunogen | A synthesized peptide derived from human CXCL11 |
| Description | Chemotactic for interleukin-activated T-cells but not unstimulated T-cells, neutrophils or monocytes. Induces calcium release in activated T-cells. Binds to CXCR3. May play an important role in CNS diseases which involve T-cell recruitment. May play a role in skin immune responses. |
| Storage Condition and Buffer | Rabbit IgG in phosphate buffered saline , pH 7.4, 150mM NaCl, 0.02% sodium azide and 50% glycerol. Store at +4°C short term. Store at -20°C long term. Avoid freeze / thaw cycle. |

Protein Information

| | |
|--------------------------|--|
| Name | CXCL11 |
| Synonyms | ITAC, SCYB11, SCYB9B |
| Function | Chemotactic for interleukin-activated T-cells but not unstimulated T-cells, neutrophils or monocytes. Induces calcium release in activated T-cells. Binds to CXCR3. May play an important role in CNS diseases which involve T-cell recruitment. May play a role in skin immune responses. |
| Cellular Location | Secreted. |
| Tissue Location | High levels in peripheral blood leukocytes, pancreas and liver astrocytes. Moderate levels in thymus, spleen and lung. Low levels in placenta, prostate and small intestine. Also found in epidermal basal layer keratinocytes in skin disorders |

Images



Western blot analysis of CXCL11 expression in THP1 cell lysate.

Please note: All products are 'FOR RESEARCH USE ONLY. NOT FOR USE IN DIAGNOSTIC OR THERAPEUTIC PROCEDURES'.