

IGFBP7 Antibody

Rabbit mAb

Catalog # AP91712

Product Information

Application	WB, IHC, IF, FC, ICC, IHF
Primary Accession	Q16270
Reactivity	Rat, Human, Mouse
Clonality	Monoclonal
Other Names	AGM; PSF; TAF; FSTL2; IBP-7; MAC25; IGFBP-7; RAMSVPS; IGFBP-7v; IGFBPRP1;
Isotype	Rabbit IgG
Host	Rabbit
Calculated MW	29130

Additional Information

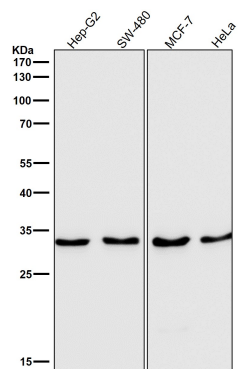
Dilution	WB 1:500~1:2000 IHC 1:50~1:200 ICC/IF 1:50~1:200 FC 1:200
Purification	Affinity-chromatography
Immunogen	A synthesized peptide derived from human IGFBP7
Description	Binds IGF-I and IGF-II with a relatively low affinity. Stimulates prostacyclin (PGI ₂) production. Stimulates cell adhesion.
Storage Condition and Buffer	Rabbit IgG in phosphate buffered saline , pH 7.4, 150mM NaCl, 0.02% sodium azide and 50% glycerol. Store at +4°C short term. Store at -20°C long term. Avoid freeze / thaw cycle.

Protein Information

Name	IGFBP7
Synonyms	MAC25, PSF
Function	Binds IGF1 and IGF2 with a relatively low affinity. Stimulates prostacyclin (PGI ₂) production. Stimulates cell adhesion. Acts as a ligand for CD93 to play a role in angiogenesis (PubMed: 38218180).
Cellular Location	Secreted.

Images

Western blot analysis of IGFBP7 expression in SW480 cell lysate.



Please note: All products are 'FOR RESEARCH USE ONLY. NOT FOR USE IN DIAGNOSTIC OR THERAPEUTIC PROCEDURES'.