

Septin 2 Antibody

Rabbit mAb

Catalog # AP91717

Product Information

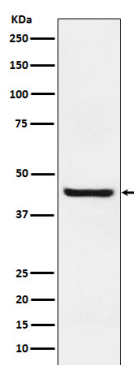
Application	WB, IHC, IF, FC, ICC, IP, IHF
Primary Accession	Q15019
Reactivity	Rat, Human, Mouse
Clonality	Monoclonal
Other Names	DIFF6; hNEDD5; KIAA0158; NEDD5; Pnutl3; SEPT2; septin 2;
Isotype	Rabbit IgG
Host	Rabbit
Calculated MW	41 KDa

Additional Information

Dilution	WB 1:500~1:2000 IHC 1:50~1:200 ICC/IF 1:50~1:200 IP 1:50 FC 1:50
Purification	Affinity-chromatography
Immunogen	A synthesized peptide derived from human Septin 2
Description	The septins are a family of cytoskeletal GTPases that play an essential role in cytokinesis in mammalian cells. Septin 2 (Nedd5) is a mammalian septin known to associate with actin based structures such as the contractile ring and stress fibers. It is involved in cytokinesis and may assemble into a multicomponent structure.
Storage Condition and Buffer	Rabbit IgG in phosphate buffered saline , pH 7.4, 150mM NaCl, 0.02% sodium azide and 50% glycerol. Store at +4°C short term. Store at -20°C long term. Avoid freeze / thaw cycle.

Protein Information

Images



Western blot analysis of Septin 2 expression in Jurkat cell lysate.

Please note: All products are 'FOR RESEARCH USE ONLY. NOT FOR USE IN DIAGNOSTIC OR THERAPEUTIC PROCEDURES'.