

Sprouty 4 Antibody

Rabbit mAb

Catalog # AP91718

Product Information

| | |
|--------------------------|----------------------------|
| Application | WB, IF, FC, ICC, IP |
| Primary Accession | Q9C004 |
| Reactivity | Rat, Human, Mouse |
| Clonality | Monoclonal |
| Other Names | Sprouty homolog 4; SPRY 4; |
| Isotype | Rabbit IgG |
| Host | Rabbit |
| Calculated MW | 32541 |

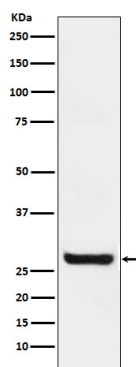
Additional Information

| | |
|-------------------------------------|--|
| Dilution | WB 1:500~1:2000 ICC/IF 1:50~1:200 IP 1:50 FC 1:50 |
| Purification | Affinity-chromatography |
| Immunogen | A synthesized peptide derived from human Sprouty 4 |
| Description | Suppresses the insulin receptor and EGFR-transduced MAPK signaling pathway, but does not inhibit MAPK activation by a constitutively active mutant Ras. Probably impairs the formation of GTP-Ras. |
| Storage Condition and Buffer | Rabbit IgG in phosphate buffered saline , pH 7.4, 150mM NaCl, 0.02% sodium azide and 50% glycerol. Store at +4°C short term. Store at -20°C long term. Avoid freeze / thaw cycle. |

Protein Information

| | |
|--------------------------|---|
| Name | SPRY4 |
| Function | Suppresses the insulin receptor and EGFR-transduced MAPK signaling pathway, but does not inhibit MAPK activation by a constitutively active mutant Ras (PubMed: 12027893). Probably impairs the formation of GTP-Ras (PubMed: 12027893). Inhibits Ras-independent, but not Ras-dependent, activation of RAF1 (PubMed: 12717443). Represses integrin-mediated cell spreading via inhibition of TESK1-mediated phosphorylation of cofilin (PubMed: 15584898). |
| Cellular Location | Cytoplasm. Cell projection, ruffle membrane; Peripheral membrane protein; Cytoplasmic side. Note=Found in the cytoplasm in unstimulated cells but is translocated to the membrane ruffles in cells stimulated with EGF (epidermal growth factor) (By similarity). Colocalizes with TESK1 in vesicular spots in the cytoplasm (PubMed:15584898) {ECO:0000250 UniProtKB:Q9WTP2, ECO:0000269 PubMed:15584898} |

Images



Western blot analysis of Sprouty 4 expression in MCF7 cell lysate.

Please note: All products are 'FOR RESEARCH USE ONLY. NOT FOR USE IN DIAGNOSTIC OR THERAPEUTIC PROCEDURES'.