

SMARCC1/BAF155 Antibody

Rabbit mAb

Catalog # AP91728

Product Information

| | |
|--------------------------|--|
| Application | WB, IF, FC, ICC, IP |
| Primary Accession | Q92922 |
| Reactivity | Rat, Human |
| Clonality | Monoclonal |
| Other Names | BAF155; CRACC1; Rsc8; SMARCC1; SRG3; SWI3; |
| Isotype | Rabbit IgG |
| Host | Rabbit |
| Calculated MW | 122867 |

Additional Information

| | |
|-------------------------------------|---|
| Dilution | WB 1:500~1:2000 ICC/IF 1:50~1:200 IP 1:50 FC 1:50 |
| Purification | Affinity-chromatography |
| Immunogen | A synthesized peptide derived from human SMARCC1/BAF155 |
| Description | Involved in transcriptional activation and repression of select genes by chromatin remodeling (alteration of DNA-nucleosome topology). May stimulate the ATPase activity of the catalytic subunit of the complex. |
| Storage Condition and Buffer | Rabbit IgG in phosphate buffered saline , pH 7.4, 150mM NaCl, 0.02% sodium azide and 50% glycerol. Store at +4°C short term. Store at -20°C long term. Avoid freeze / thaw cycle. |

Protein Information

| | |
|-----------------|---|
| Name | SMARCC1 (HGNC:11104) |
| Synonyms | BAF155 |
| Function | Involved in transcriptional activation and repression of select genes by chromatin remodeling (alteration of DNA-nucleosome topology). Component of SWI/SNF chromatin remodeling complexes that carry out key enzymatic activities, changing chromatin structure by altering DNA-histone contacts within a nucleosome in an ATP-dependent manner. May stimulate the ATPase activity of the catalytic subunit of the complex (PubMed: 10078207 , PubMed: 29374058). Belongs to the neural progenitors-specific chromatin remodeling complex (npBAF complex) and the neuron-specific chromatin remodeling complex (nBAF complex). During neural development a switch from a stem/progenitor to a postmitotic chromatin remodeling mechanism occurs as neurons exit the cell cycle and become committed to their adult state. The transition from proliferating neural stem/progenitor cells to postmitotic neurons requires a switch in subunit composition of the npBAF and nBAF complexes. As neural progenitors exit mitosis and differentiate into |

neurons, npBAF complexes which contain ACTL6A/BAF53A and PHF10/BAF45A, are exchanged for homologous alternative ACTL6B/BAF53B and DPF1/BAF45B or DPF3/BAF45C subunits in neuron-specific complexes (nBAF). The npBAF complex is essential for the self-renewal/proliferative capacity of the multipotent neural stem cells. The nBAF complex along with CREST plays a role regulating the activity of genes essential for dendrite growth (By similarity).

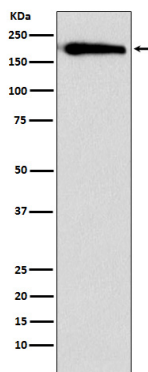
Cellular Location

Nucleus. Cytoplasm

Tissue Location

Expressed in brain, heart, muscle, placenta, lung, liver, muscle, kidney and pancreas

Images



Western blot analysis of SMARCC1 expression in HeLa cell lysate.

Please note: All products are 'FOR RESEARCH USE ONLY. NOT FOR USE IN DIAGNOSTIC OR THERAPEUTIC PROCEDURES'.