

# DNA Ligase I Antibody

Rabbit mAb

Catalog # AP91730

## Product Information

---

<b>Application</b>	WB, IHC, IF, ICC, IHF
<b>Primary Accession</b>	<a href="#">P18858</a>
<b>Reactivity</b>	Rat, Human
<b>Clonality</b>	Monoclonal
<b>Other Names</b>	DNA ligase 1; DNA ligase I; lig1;
<b>Isotype</b>	Rabbit IgG
<b>Host</b>	Rabbit
<b>Calculated MW</b>	101736

## Additional Information

---

<b>Dilution</b>	WB 1:500~1:2000 IHC 1:50~1:200 ICC/IF 1:50~1:200
<b>Purification</b>	Affinity-chromatography
<b>Immunogen</b>	A synthesized peptide derived from human DNA Ligase I
<b>Description</b>	DNA ligase that seals nicks in double-stranded DNA during DNA replication, DNA recombination and DNA repair.
<b>Storage Condition and Buffer</b>	Rabbit IgG in phosphate buffered saline , pH 7.4, 150mM NaCl, 0.02% sodium azide and 50% glycerol. Store at +4°C short term. Store at -20°C long term. Avoid freeze / thaw cycle.

## Protein Information

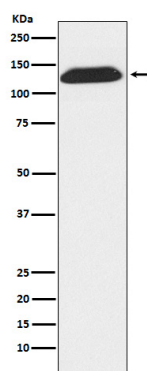
---

<b>Name</b>	LIG1
<b>Function</b>	DNA ligase that seals nicks in double-stranded during DNA repair (PubMed: <a href="#">30395541</a> ). Also involved in DNA replication and DNA recombination.
<b>Cellular Location</b>	Nucleus.

## Images

---

Western blot analysis of DNA Ligase I expression in Molt4 cell lysate.



Please note: All products are 'FOR RESEARCH USE ONLY. NOT FOR USE IN DIAGNOSTIC OR THERAPEUTIC PROCEDURES'.