

# Claudin 11 Antibody

Rabbit mAb

Catalog # AP91736

## Product Information

---

<b>Application</b>	WB, FC
<b>Primary Accession</b>	<a href="#">O75508</a>
<b>Reactivity</b>	Rat, Human, Mouse
<b>Clonality</b>	Monoclonal
<b>Other Names</b>	Claudin 11; CLD11_HUMAN; Cldn11; OSP; OTM;
<b>Isotype</b>	Rabbit IgG
<b>Host</b>	Rabbit
<b>Calculated MW</b>	21993

## Additional Information

---

<b>Dilution</b>	WB 1:500~1:2000 FC 1:100
<b>Purification</b>	Affinity-chromatography
<b>Immunogen</b>	A synthesized peptide derived from human Oligodendrocyte Specific Protein
<b>Description</b>	Plays a major role in tight junction-specific obliteration of the intercellular space, through calcium-independent cell-adhesion activity.
<b>Storage Condition and Buffer</b>	Rabbit IgG in phosphate buffered saline , pH 7.4, 150mM NaCl, 0.02% sodium azide and 50% glycerol. Store at +4°C short term. Store at -20°C long term. Avoid freeze / thaw cycle.

## Protein Information

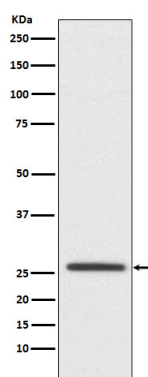
---

<b>Name</b>	CLDN11
<b>Synonyms</b>	OSP, OTM
<b>Function</b>	Plays a major role in tight junction-specific obliteration of the intercellular space, through calcium-independent cell-adhesion activity.
<b>Cellular Location</b>	Cell junction, tight junction. Cell membrane; Multi-pass membrane protein

## Images

---

Western blot analysis of Oligodendrocyte Specific Protein expression in SH-SY5Y cell lysate.



Please note: All products are 'FOR RESEARCH USE ONLY. NOT FOR USE IN DIAGNOSTIC OR THERAPEUTIC PROCEDURES'.