

ELMO1 Antibody

Rabbit mAb

Catalog # AP91741

Product Information

Application	WB, IF, FC, ICC, IP
Primary Accession	Q92556
Reactivity	Rat, Human, Mouse
Clonality	Monoclonal
Other Names	CED12; Ced12 homolog 1; ELMO 1;
Isotype	Rabbit IgG
Host	Rabbit
Calculated MW	83829

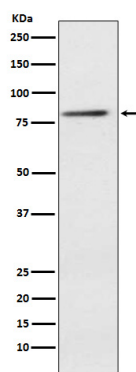
Additional Information

Dilution	WB 1:500~1:2000 ICC/IF 1:50~1:200 IP 1:50 FC 1:50
Purification	Affinity-chromatography
Immunogen	A synthesized peptide derived from human ELMO1
Description	Involved in cytoskeletal rearrangements required for phagocytosis of apoptotic cells and cell motility. Acts in association with DOCK1 and CRK.
Storage Condition and Buffer	Rabbit IgG in phosphate buffered saline , pH 7.4, 150mM NaCl, 0.02% sodium azide and 50% glycerol. Store at +4°C short term. Store at -20°C long term. Avoid freeze / thaw cycle.

Protein Information

Name	ELMO1
Synonyms	KIAA0281
Function	Involved in cytoskeletal rearrangements required for phagocytosis of apoptotic cells and cell motility. Acts in association with DOCK1 and CRK. Was initially proposed to be required in complex with DOCK1 to activate Rac Rho small GTPases. May enhance the guanine nucleotide exchange factor (GEF) activity of DOCK1.
Cellular Location	Cytoplasm. Cell membrane. Note=Translocation to plasma membrane seems to be mediated by DOCK1 and CRK
Tissue Location	Widely expressed, with a higher expression in the spleen and placenta

Images



Western blot analysis of ELMO1 expression in Jurkat cell lysate.

Please note: All products are 'FOR RESEARCH USE ONLY. NOT FOR USE IN DIAGNOSTIC OR THERAPEUTIC PROCEDURES'.