

RYBP Antibody

Rabbit mAb

Catalog # AP91746

Product Information

Application	WB, IHC, IF, FC, ICC, IP, IHF
Primary Accession	Q8N488
Reactivity	Rat, Human, Mouse
Clonality	Monoclonal
Other Names	AAP1; APAP1; cb337; DEDAF; RYBP; rybpa; YEAF1;
Isotype	Rabbit IgG
Host	Rabbit
Calculated MW	24822

Additional Information

Dilution	WB 1:500~1:2000 IHC 1:50~1:200 ICC/IF 1:50~1:200 IP 1:50 FC 1:50
Purification	Affinity-chromatography
Immunogen	A synthesized peptide derived from human RYBP
Description	May be implicated in the regulation of the transcription as a repressor of the transcriptional activity of E4TF1. In tumor cell lines, may induce apoptosis.
Storage Condition and Buffer	Rabbit IgG in phosphate buffered saline , pH 7.4, 150mM NaCl, 0.02% sodium azide and 50% glycerol. Store at +4°C short term. Store at -20°C long term. Avoid freeze / thaw cycle.

Protein Information

Name	RYBP
Synonyms	DEDAF, YEAF1
Function	Component of a Polycomb group (PcG) multiprotein PRC1-like complex, a complex class required to maintain the transcriptionally repressive state of many genes, including Hox genes, throughout development. PcG PRC1-like complex acts via chromatin remodeling and modification of histones; it mediates monoubiquitination of histone H2A 'Lys-119', rendering chromatin heritably changed in its expressibility (PubMed: 25519132). Component of a PRC1-like complex that mediates monoubiquitination of histone H2A 'Lys-119' on the X chromosome and is required for normal silencing of one copy of the X chromosome in XX females. May stimulate ubiquitination of histone H2A 'Lys-119' by recruiting the complex to target sites (By similarity). Inhibits ubiquitination and subsequent degradation of TP53, and thereby plays a role in regulating transcription of TP53 target genes (PubMed: 19098711). May also regulate the ubiquitin-mediated proteasomal degradation of other proteins like FANK1 to regulate apoptosis (PubMed: 14765135 , PubMed: 27060496). May be implicated in the regulation of the transcription as a repressor of the

transcriptional activity of E4TF1 (PubMed:[11953439](#)). May bind to DNA (By similarity). May play a role in the repression of tumor growth and metastasis in breast cancer by down-regulating SRRM3 (PubMed:[27748911](#)).

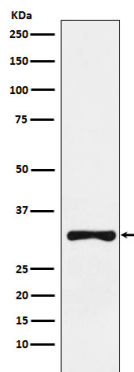
Cellular Location

Nucleus. Cytoplasm. Nucleus, nucleoplasm {ECO:0000250|UniProtKB:Q8CC15}. Note=Primarily found in the nucleus Detected in a punctate pattern likely to represent Polycomb group (PcG) bodies (By similarity). {ECO:0000250|UniProtKB:Q8CC15}

Tissue Location

Down-regulated in breast cancer tissues and in several breast cancer cell lines (at protein level) (PubMed:27748911) Widely expressed with highest levels in lymphoid tissues and placenta

Images



Western blot analysis of RYBP expression in SW480 cell lysate.

Please note: All products are 'FOR RESEARCH USE ONLY. NOT FOR USE IN DIAGNOSTIC OR THERAPEUTIC PROCEDURES'.