

Mast Cell Chymase Antibody

Rabbit mAb

Catalog # AP91748

Product Information

Application	WB, IHC
Primary Accession	P23946
Reactivity	Human
Clonality	Monoclonal
Other Names	Chymase 1; Chymase; CMA1; CYH; CYM; Mcp-5; MCP3P; Mcpt5; MCT1; MMCP-5;
Isotype	Rabbit IgG
Host	Rabbit
Calculated MW	27325

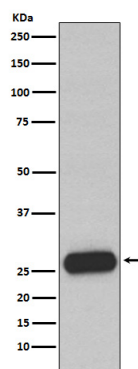
Additional Information

Dilution	WB 1:1000~1:5000 IHC 1:50~1:200
Purification	Affinity-chromatography
Immunogen	A synthesized peptide derived from human Mast Cell Chymase
Description	Major secreted protease of mast cells with suspected roles in vasoactive peptide generation, extracellular matrix degradation, and regulation of gland secretion.
Storage Condition and Buffer	Rabbit IgG in phosphate buffered saline , pH 7.4, 150mM NaCl, 0.02% sodium azide and 50% glycerol. Store at +4°C short term. Store at -20°C long term. Avoid freeze / thaw cycle.

Protein Information

Name	CMA1
Synonyms	CYH, CYM
Function	Major secreted protease of mast cells with suspected roles in vasoactive peptide generation, extracellular matrix degradation, and regulation of gland secretion.
Cellular Location	Secreted. Cytoplasmic granule. Note=Mast cell granules
Tissue Location	Mast cells in lung, heart, skin and placenta. Expressed in both normal skin and in urticaria pigmentosa lesions

Images



Western blot analysis of Mast Cell Chymase expression in Human small intestine lysate.

Please note: All products are 'FOR RESEARCH USE ONLY. NOT FOR USE IN DIAGNOSTIC OR THERAPEUTIC PROCEDURES'.