

# eIF2B epsilon Antibody

Rabbit mAb

Catalog # AP91756

## Product Information

|                          |   |
|--------------------------|---|
| <b>Application</b>       | WB, IHC, IF, ICC, IHF                                   |
| <b>Primary Accession</b> | <a href="#">Q13144</a>                                  |
| <b>Reactivity</b>        | Human   |
| <b>Clonality</b>         | Monoclonal  |
| <b>Other Names</b>       | CACH; CLE; EIF 2B; EIF2B; EIF2B5; EIF2BE; EIF2Bepsilon; |
| <b>Isotype</b>           | Rabbit IgG  |
| <b>Host</b>              | Rabbit  |
| <b>Calculated MW</b>     | 80380   |

## Additional Information

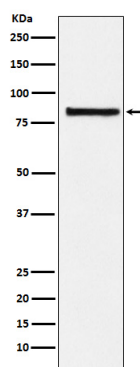
|                                     |   |
|-------------------------------------|---|
| <b>Dilution</b>                     | WB 1:500~1:2000 IHC 1:50~1:200 ICC/IF 1:50~1:200  |
| <b>Purification</b>                 | Affinity-chromatography   |
| <b>Immunogen</b>                    | A synthesized peptide derived from human eIF2B epsilon  |
| <b>Description</b>                  | Catalyzes the exchange of eukaryotic initiation factor 2-bound GDP for GTP.   |
| <b>Storage Condition and Buffer</b> | Rabbit IgG in phosphate buffered saline , pH 7.4, 150mM NaCl, 0.02% sodium azide and 50% glycerol. Store at +4°C short term. Store at -20°C long term. Avoid freeze / thaw cycle. |

## Protein Information

|                          |  |
|--------------------------|--|
| <b>Name</b>              | EIF2B5   |
| <b>Synonyms</b>          | EIF2BE   |
| <b>Function</b>          | Acts as a component of the translation initiation factor 2B (eIF2B) complex, which catalyzes the exchange of GDP for GTP on eukaryotic initiation factor 2 (eIF2) gamma subunit (PubMed: <a href="#">25858979</a> , PubMed: <a href="#">27023709</a> , PubMed: <a href="#">31048492</a> ). Its guanine nucleotide exchange factor activity is repressed when bound to eIF2 complex phosphorylated on the alpha subunit, thereby limiting the amount of methionyl- initiator methionine tRNA available to the ribosome and consequently global translation is repressed (PubMed: <a href="#">25858979</a> , PubMed: <a href="#">31048492</a> ). |
| <b>Cellular Location</b> | Cytoplasm, cytosol {ECO:0000250 UniProtKB:P56287}  |

## Images

Western blot analysis of eIF2B epsilon expression in Hela



cell lysate.

Please note: All products are 'FOR RESEARCH USE ONLY. NOT FOR USE IN DIAGNOSTIC OR THERAPEUTIC PROCEDURES'.