

# p40 Antibody

Rabbit mAb

Catalog # AP91759

## Product Information

---

<b>Application</b>	WB, FC
<b>Primary Accession</b>	<a href="#">Q7Z6M1</a>
<b>Reactivity</b>	Human
<b>Clonality</b>	Monoclonal
<b>Other Names</b>	p40; RAB9p40; RABEPK; RGD1310612; RP11 65N13.1; RP23-446N16.2;
<b>Isotype</b>	Rabbit IgG
<b>Host</b>	Rabbit
<b>Calculated MW</b>	40565

## Additional Information

---

<b>Dilution</b>	WB 1:500~1:2000 FC 1:50
<b>Purification</b>	Affinity-chromatography
<b>Immunogen</b>	A synthesized peptide derived from human p40
<b>Description</b>	Rab9 effector required for endosome to trans-Golgi network (TGN) transport.
<b>Storage Condition and Buffer</b>	Rabbit IgG in phosphate buffered saline , pH 7.4, 150mM NaCl, 0.02% sodium azide and 50% glycerol. Store at +4°C short term. Store at -20°C long term. Avoid freeze / thaw cycle.

## Protein Information

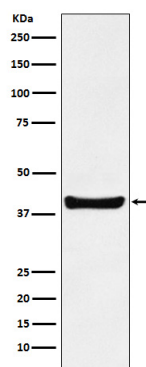
---

<b>Name</b>	RABEPK ( <a href="#">HGNC:16896</a> )
<b>Synonyms</b>	RAB9P40
<b>Function</b>	Rab9 effector required for endosome to trans-Golgi network (TGN) transport.
<b>Cellular Location</b>	Cytoplasm. Endosome membrane. Note=Interaction with PIKFYVE and subsequent phosphorylation recruits it to the endosomal membrane

## Images

---

Western blot analysis of p40 expression in HepG2 cell lysate.



Please note: All products are 'FOR RESEARCH USE ONLY. NOT FOR USE IN DIAGNOSTIC OR THERAPEUTIC PROCEDURES'.