

# PHOX2B Antibody

Rabbit mAb

Catalog # AP91774

## Product Information

<b>Application</b>	WB, IHC, IF, ICC, IHF
<b>Primary Accession</b>	<a href="#">Q99453</a>
<b>Reactivity</b>	Human, Mouse
<b>Clonality</b>	Monoclonal
<b>Other Names</b>	NBLST2; NBPhox; PHOX 2B; PHOX2B; PMX 2B; PMX2B;
<b>Isotype</b>	Rabbit IgG
<b>Host</b>	Rabbit
<b>Calculated MW</b>	31621

## Additional Information

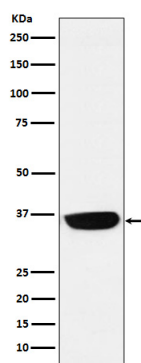
<b>Dilution</b>	WB 1:500~1:2000 IHC 1:100~1:500 ICC/IF 1:50~1:200
<b>Purification</b>	Affinity-chromatography
<b>Immunogen</b>	A synthesized peptide derived from human PHOX2B
<b>Description</b>	Involved in the development of several major noradrenergic neuron populations, including the locus coeruleus. Transcription factor which could determine a neurotransmitter phenotype in vertebrates. Enhances second-messenger-mediated activation of the dopamine beta-hydrolase and c-fos promoters, and of several enhancers including cAMP-response element and serum-response element.
<b>Storage Condition and Buffer</b>	Rabbit IgG in phosphate buffered saline , pH 7.4, 150mM NaCl, 0.02% sodium azide and 50% glycerol. Store at +4°C short term. Store at -20°C long term. Avoid freeze / thaw cycle.

## Protein Information

<b>Name</b>	PHOX2B
<b>Synonyms</b>	PMX2B
<b>Function</b>	Involved in the development of several major noradrenergic neuron populations, including the locus coeruleus. Transcription factor which could determine a neurotransmitter phenotype in vertebrates. Enhances second-messenger-mediated activation of the dopamine beta- hydrolase and c-fos promoters, and of several enhancers including cAMP- response element and serum-response element.
<b>Cellular Location</b>	Nucleus {ECO:0000255 PROSITE-ProRule:PRU00108}.
<b>Tissue Location</b>	Expressed in neuroblastoma, brain and adrenal gland

## Images

---



Western blot analysis of PHOX2B expression in Neuro-2a cell lysate.

Please note: All products are 'FOR RESEARCH USE ONLY. NOT FOR USE IN DIAGNOSTIC OR THERAPEUTIC PROCEDURES'.