

eIF4A1 Antibody

Rabbit mAb

Catalog # AP91777

Product Information

Application	WB, IF, FC, ICC
Primary Accession	P60842
Reactivity	Rat, Human, Mouse
Clonality	Monoclonal
Other Names	DDX2; DDX2A; eIF 4A I; EIF4A; eIF4A I; eIF4A-I; EIF4A1;
Isotype	Rabbit IgG
Host	Rabbit
Calculated MW	46154

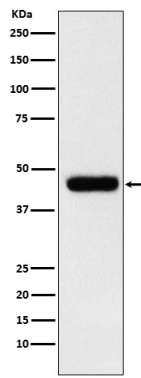
Additional Information

Dilution	WB 1:500~1:2000 ICC/IF 1:50~1:200 FC 1:50
Purification	Affinity-chromatography
Immunogen	A synthesized peptide derived from human eIF4A1
Description	ATP-dependent RNA helicase which is a subunit of the eIF4F complex involved in cap recognition and is required for mRNA binding to ribosome.
Storage Condition and Buffer	Rabbit IgG in phosphate buffered saline , pH 7.4, 150mM NaCl, 0.02% sodium azide and 50% glycerol. Store at +4°C short term. Store at -20°C long term. Avoid freeze / thaw cycle.

Protein Information

Name	EIF4A1
Synonyms	DDX2A, EIF4A
Function	ATP-dependent RNA helicase which is a subunit of the eIF4F complex involved in cap recognition and is required for mRNA binding to ribosome (PubMed: 20156963). In the current model of translation initiation, eIF4A unwinds RNA secondary structures in the 5'-UTR of mRNAs which is necessary to allow efficient binding of the small ribosomal subunit, and subsequent scanning for the initiator codon. As a result, promotes cell proliferation and growth (PubMed: 20156963).
Cellular Location	Cytoplasm, perinuclear region. Cell membrane. Cytoplasm, Stress granule. Note=Colocalizes with PKP1 in stress granules following arsenate or hydrogen peroxide treatment

Images



Western blot analysis of eIF4A1 expression in MCF7 cell lysate.

Please note: All products are 'FOR RESEARCH USE ONLY. NOT FOR USE IN DIAGNOSTIC OR THERAPEUTIC PROCEDURES'.