

Geminin Antibody

Rabbit mAb

Catalog # AP91780

Product Information

Application	WB, IHC, IF, ICC, IHF
Primary Accession	O75496
Reactivity	Human
Clonality	Monoclonal
Other Names	Gem; Geminin; GMNN;
Isotype	Rabbit IgG
Host	Rabbit
Calculated MW	23565

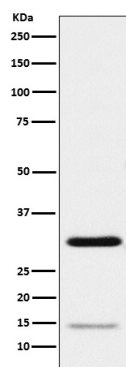
Additional Information

Dilution	WB 1:500~1:1000 IHC 1:50~1:200 ICC/IF 1:50~1:200
Purification	Affinity-chromatography
Immunogen	A synthesized peptide derived from human Geminin
Description	Inhibits DNA replication by preventing the incorporation of MCM complex into prereplication complex (pre-RC). It is degraded during the mitotic phase of the cell cycle. Its destruction at the metaphase-anaphase transition permits replication in the succeeding cell cycle.
Storage Condition and Buffer	Rabbit IgG in phosphate buffered saline , pH 7.4, 150mM NaCl, 0.02% sodium azide and 50% glycerol. Store at +4°C short term. Store at -20°C long term. Avoid freeze / thaw cycle.

Protein Information

Name	GMNN
Function	Inhibits DNA replication by preventing the incorporation of MCM complex into pre-replication complex (pre-RC) (PubMed: 14993212 , PubMed: 20129055 , PubMed: 24064211 , PubMed: 9635433). It is degraded during the mitotic phase of the cell cycle (PubMed: 14993212 , PubMed: 24064211 , PubMed: 9635433). Its destruction at the metaphase- anaphase transition permits replication in the succeeding cell cycle (PubMed: 14993212 , PubMed: 24064211 , PubMed: 9635433). Inhibits histone acetyltransferase activity of KAT7/HBO1 in a CDT1-dependent manner, inhibiting histone H4 acetylation and DNA replication licensing (PubMed: 20129055). Inhibits the transcriptional activity of a subset of Hox proteins, enrolling them in cell proliferative control (PubMed: 22615398).
Cellular Location	Cytoplasm. Nucleus. Note=Mainly cytoplasmic but can be relocalized to the nucleus.

Images



Western blot analysis of Geminin expression in HeLa cell lysate.

Please note: All products are 'FOR RESEARCH USE ONLY. NOT FOR USE IN DIAGNOSTIC OR THERAPEUTIC PROCEDURES'.